

TECHNICAL MANUAL

**ORGANIZATIONAL AND DIRECT SUPPORT MAINTENANCE
REPAIR PARTS AND SPECIAL TOOLS LIST
(INCLUDING DEPOT MAINTENANCE REPAIR
PARTS AND SPECIAL TOOLS)
FOR
NIGHT VISION SIGHT,
INDIVIDUAL SERVED WEAPONAN/PVS-2(NSN 5855-00-087-2947)
AN/PVS-2A (NSN 5855-00-179-3708)
AN/PVS-2B (NSN 5855-00-760-3869)**

Distribution authorized to the Department of Defense and DOD contractors only for official use or for administration or operational purposes. This determination was made en 27 August 1988. Other requests for this document will be referred to Commander, US Army Communications -Electronics Fort Monmouth, ATN: AMSEL-LC-ME-P, Fort Monmouth, NJ 07703-5000.

DESTRUCTION NOTICE-Destroy by any method that will prevent disclosure of contents or reconstruction of the document.

HEADQUARTERS, DEPARTMENT OF THE ARMY 15

DECEMBER 1988

Technical Manual
No 11-5855-203-23P

HEADQUARTERS
DEPARTMENT OF THE ARMY
Washington, DC, 15 December 1988

**ORGANIZATIONAL AND DIRECT SUPPORT SUPPORT MAINTENANCE
REPAIR PARTS AND SPECIAL TOOLS LIST
(INCLUDING DEPOT MAINTENANCE REPAIR PARTS AND SPECIAL TOOLS)**

FOR

**NIGHT VISION SIGHT, INDIVIDUAL SERVED WEAPON
AN/PVS-2 (NSN 5855-00-087-2947)
AN/PVS-2A (NSN 5855-00-179-3708)
AN/PVS-2B (NSN 5855-00-760-3869)**

Current as of 15 September 1988

REPORTING ERRORS AND RECOMMENDING IMPROVEMENTS

You can help improve this manual. If you find any mistakes or if you know of a way to improve the procedures, please let us know. Mail your letter, DA Form 2028 (Recommended Changes to Publications and Blank Forms), or DA Form 2028-2 located in back of this manual direct to: Commander, US Army Communications Electronics Command and Fort Monmouth, ATTN: AMSEL-LC-ME-PS, Fort Monmouth, New Jersey 07703-5000. In either case, a reply will be furnished direct to you.

Table of Contents

		Page	Illus/ Figure
Section	I.	INTRODUCTION.....	1
	II.	REPAIR PARTS LIST	1-1
Group	00	Night Vision Sight, Individual Served Weapon, AN/PVS-2, AN/PVS-2A, and AN/PVS-2B	1-1 1
	01	Case, Night Vision Sight, CY-6302/PVS-2	2-1 2
	02	Image Intensifier Assembly	3-1 3

*This manual supersedes TM 11-5855-203-23P, 24 October 1977.

TABLE OF CONTENTS - Continued

		Illus Page	Figure
Group 03	Night Vision Sight Subassembly	4-1	4
	0301 Boresight Assembly	5-1	5
	0302 Eyepiece Assembly	6-1	6
	030201 Man Body Assembly.....	7-1	7
	030202 Cell Lens Assembly.....	8-1	8
	0303 Objective Lens Assembly (used on AN/PVS-2 only).....	9-1	9
	Objective Lens Assembly	10-1	10
	030301 Cone Assembly (used on AN/PVS-2 only).....	11-1	11
04	Adapter Assembly M16.....	12-1	12
05	Mount Assembly M14	13-1	13
06	Mount, Telescope M67	14-1	14
Section III	SPECIAL TOOL LIST (Not Applicable)		
IV.	CROSS-REFERENCE INDEXES		
	National stock number index	I-1	
	Part number index	I-3	
	Figure and t number index.....	I-7	

SECTION I

INTRODUCTION

1. Scope

This manual lists and authorizes spares and repair parts; special tools; special test, measurement, and diagnostic equipment (TMDE); and other special support equipment required for performance of organizational and direct support maintenance of the AN/PVS-2, AN/PVS-2A, and AN/PVS-2B. It authorizes the requisitioning, issue, and disposition of spares, repair parts and special tools as indicated by the source, maintenance and recoverability (SMR) codes.

2. General

This Repair Parts and Special Tools List is divided into the following sections:

a. Section II. Repair Parts List. A list of spares and repair parts authorized by this RPSTL for use in the performance of maintenance. The list also includes parts which must be removed for replacement of the authorized parts. Parts list are composed of functional groups in ascending item number sequence. Figure numbers are listed directly beneath the group header.

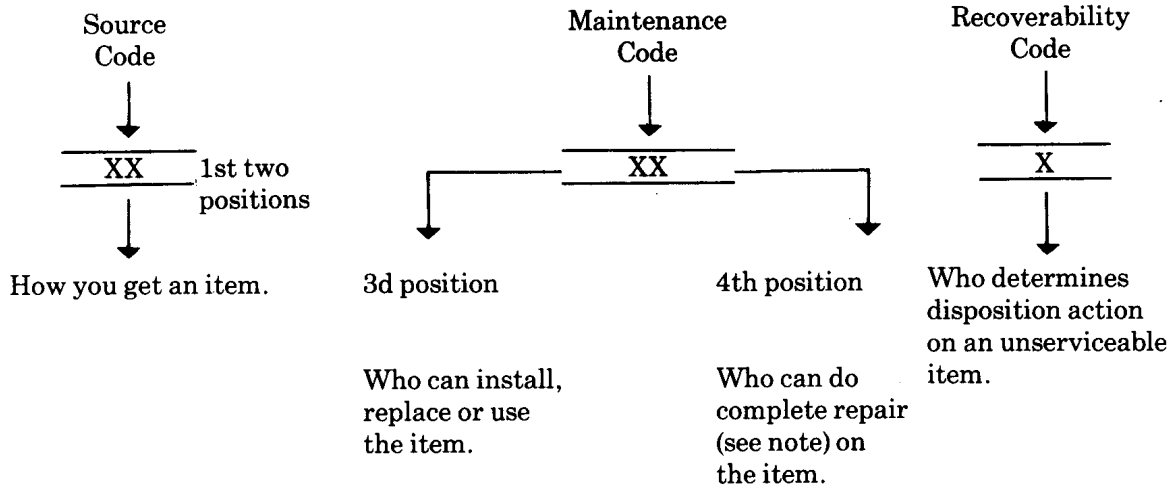
b. Section III. Special Tools List. Not applicable.

c. Section IV. Cross-Reference Indexes. A list, in National item identification number (NIIN) sequence, of all National stock numbered items appearing in the listing, followed by a list in alphanumeric sequence of all part numbers appearing in the listings. National stock numbers and part numbers are cross-referenced to each illustration figure and item number appearance. The figure number and item number index lists figure and item numbers in numeric sequence and cross-references National stock number, Federal Supply Code for Manufacturer and part numbers.

3. Explanation of Columns (Section II and III)

a. Item No. (Column (1)). Indicates the number used to identify items called out in the illustration.

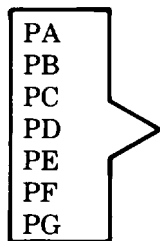
b. SMR Code (Column (2)). The source, maintenance, and recoverability (SMR) code is a five-position code containing supply/requisitioning information, maintenance category authorization criteria, and disposition instruction, as shown in the following breakout:



NOTE

Complete repair: Maintenance capacity, capability, and authority to perform all corrective maintenance tasks of the "repair" function in a use/user environment in order to restore serviceability to a failed item.

- (1) Source code. The source code tells you how to get an item needed for maintenance, repair, or overhaul of an end item/equipment. Explanations of source codes follows:

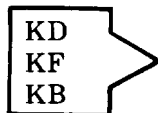


Explanation

Stocked items: use the applicable NSN to request/requisition items with these source codes. They are authorized to the category indicated by the code entered in the third position of the SMR code.

NOTE

Items coded PC are subject to deterioration.



Items with these codes are not to be requested/requisitioned individually. They are part of a kit which is authorized to the maintenance category indicated in the third position of the SMR code. The complete kit must be requisitioned and applied.

Code

Explanation

MO—Made at org/
AVUM category
MF—Made at DS/
AVUM category
MH—Made at GS
category
ML—Made at
Specialized
Repair Activity
(SRA)
MD—Made at Depot

Items with these codes are not to be requested/requisitioned individually. They must be made from bulk material which is identified by the part number in the description and usable on code (UOC) column and listed in the Bulk Material group of the repair parts list. If the item is authorized to you by the third position code of the SMR code, but the source code indicates it is made at a higher category, order the item from the higher category of maintenance.

AO—Assembled by
org/AVUM
category
AF—Assembled by
DS/AVUM
category
AH—Assembled by
GS category
AL—Assembled by
SRA
AD—Assembled by
Depot

Items with these codes are not to be requested/requisitioned individually. The parts that make up the assembled item must be requisitioned or fabricated and assembled at the category of maintenance indicated by the source code. If the third position code of the SMR code authorizes you to replace the item, but the source code indicates the item is assembled at a higher category, order the item from the higher category of maintenance.

Code

Explanation

- XA - Do not requisition an "XA" coded item. Order its next higher assembly.
- XB - If an "XB" item is not available from salvage, order it using the FCSM and part number given.
- XC - Installation drawing, diagram, instruction sheet, field service drawing, that is identified by manufacturer's part number.
- XD - Item is not stocked. Order an "XD" coded item through normal supply channels using the FSCM and part number given, if not available.

NOTE

Cannibalization or controlled exchange, when authorized, may be used as a source of supply for items with the above source codes, except for those source coded "XA" or those aircraft support items restricted by requirements of AR 750-1.

(2) Maintenance code. Maintenance codes tell you the category of maintenance authorized to USE and REPAIR support items. The maintenance codes are entered in the third and fourth positions of the SMR code as follows:

(a) The maintenance code entered in the third position tells you the lowest maintenance category authorized to remove, replace, and use an item. The maintenance code entered in the third position will indicate authorization to one of the following categories of maintenance.

<u>Code</u>	<u>Application/Explanation</u>
C	- Crew or operator maintenance done within organizational or aviation maintenance.
O	- Organizational or aviation unit category can remove, replace, and use the item.
F	- Direct support or aviation intermediate category can remove, replace, and use the item.
H	- General support category can remove, replace, and use the item.
L	- Specialized repair activity can remove, replace, and use the item.
D	- Depot category can remove, replace, and use the item.

(b) The maintenance code entered in the fourth position tells whether or not the item is to be repaired and identifies the lowest maintenance category with the capability to do complete repair (i.e., perform all authorized repair functions). This position will contain one of the following maintenance codes.

NOTE

Some limited repair may be done on the item at a lower category of maintenance, if authorized by the Maintenance Allocation Chart (MAC) and SMR codes.

<u>Code</u>	<u>Application/Explanation</u>
O	- Organizational or aviation unit is the lowest category that can do complete repair of the item.
F	- Direct support or aviation intermediate is the lowest category that can do complete repair of the item.
H	- General support is the lowest category that can do complete repair of the item.
L	- Specialized repair activity (designate the specialized repair activity) is the lowest category that can do complete repair of the item.
D	- Depot is the lowest category that can do complete repair of the item.

<u>Code</u>	<u>Application/Explanation</u>
Z -	Nonreparable. No repair is authorized.
B -	No repair is authorized. (No parts or special tools are authorized for the maintenance of a "B" coded item.) However, the item may be reconditioned by adjusting, lubricating, etc., at the user category.
<p>(3) <u>Recoverability code</u>. Recoverability codes are assigned to items to indicate the disposition action on unserviceable items. The recoverability code is entered in the fifth position of the SMR Code as follows:</p>	

<u>Recoverability codes</u>	<u>Application/Explanation</u>
Z -	Nonreparable item. When unserviceable, condemn and dispose of the item at the category of maintenance shown in the third position of SMR code.
O -	Reparable item. When uneconomically repairable, condemn and dispose of the item at organizational or aviation unit category.
F -	Reparable item. When uneconomically repairable, condemn and dispose of the item at direct support or aviation intermediate category.
H -	Reparable item. When uneconomically repairable, condemn and dispose of the item at general support category. D - Repairable item. When beyond lower category repair capability, return to depot. Condemnation and disposal of item not authorized below depot category.
L -	Reparable item. Condemnation and disposal not authorized below specialized repair activity (SRA).
A -	Item requires special handling or condemnation procedures because of specific reasons (e.g., precious metal content, high dollar value, critical material, or hazardous material). Refer appropriate manuals/directives for specific instructions.

c. FSCM (Column (3)). The Federal Supply Code for Manufacturer (FSCM) is a 5-digit numeric code which is used to identify the manufacturer, distributor, or Government agency, etc., that supplies the item.

d. Part Number (Column (4)). Indicates the primary number used by the manufacturer (individual, company, firm, corporation, or Government activity), which controls the design and characteristics of the item by means of its engineering drawings, specifications, standards, and inspection requirements to identify an item or range of items.

NOTE

When you use an NSN to requisition an item, the item you receive may have a different part number from the part ordered.

e. Description and Usable on Code (UOC) (Column (5)). This column includes the following information.

(1) The Federal item name and, when required, a minimum description to identify the item.

(2) Usable on code, when applicable (para 5).

(3) The statement "END OF FIGURE" appears just below the last item description in Column (5) for a given figure in both section II and section III

f. Qty (Column (6)). Indicates the quantity of the item used in the breakout shown on the illustration figure, which is prepared for a functional group, subfunctional group, or an assembly. A "V" appearing in this column in lieu of a quantity indicates that the quantity is variable and the quantity may vary from application to application.

4. Explanation of Columns (Section IV)

a. National Stock Number (NSN) Index.

(1) Stock number column. This column lists the NSN by National item identification number (NIIN) sequence. The NIIN consists of the last nine digits of the NSN. When using this column to locate an item, ignore the first four digits of the NSN. When requisitioning items use the complete NSN (13 digits).

(2) Fig. column. This column lists the number of the figure where the item is identified/located. The illustrations are in numerical sequence in sections II and III.

(3) Item column. The item number identifies the item associated with the figure listed in the adjacent Fig. column. This item is also identified by the NSN listed on the same line. b. Part Number Index. Part numbers in this index are listed by part number in ascending alphanumeric sequence. (1) FSCM column. This column lists the Federal supply code for manufacturer. (2) Part number column. This column indicates the part number assigned to the item. (3) Stock number column. This column lists the National stock number for the associated part number and manufacturer identified in the part number and FSCM columns to the left.

(4) Fig. column. This column lists the number of the figure where the item is identified/located in sections II and III.

(5) Item column The item number is that number assigned to the item as it appears in the figure referenced in the adjacent figure number column.

c. Figure and Item Number Index.

(1) Fig. column. This column lists the number of the figure where the item is identified/located in sections II and III.

(2) Item column. The item number is that number assigned to the item as it appears in the figure referenced in the adjacent figure number column.

(3) Stock number column. This column lists the National stock number for the item.

(4) FSCM column. The Federal supply code for manufacturer (FSCM) is a 5-digit numeric code used to identify the manufacturer, distributor, or Government agency, etc., that supplies the item.

(5) Part number column. Indicates the primary number used by the manufacturer (individual, firm, corporation, or Government activity), which controls the design and characteristics of the item by means of its engineering drawings, specifications, standards, and inspection requirements to identify an item or range of item.

5. Special Information

a. Usable on Code. The usable on code appears in the lower left corner of the description column heading. Usable on codes are shown as "UOC: " in the description column (justified left) on the first line applicable item description nomenclature. Uncoded items are applicable to all models. Identification of the usable on codes used in this RPSTL are:

<u>Code</u>	<u>Used on</u>
CNW	AN/PVS-2
BDH	AN/PVS-2A
CFE	AN/PVS-2B

b. Associated Publications. The following publications pertain to the AN/PVS-2, AN/PVS-2A, and AN/PVS-2B and their components:

SB 11-631, Identification Plates and Name Plates for Communication Equipment TM 11-5855-203-10, Night Vision Sight, Individual Served Weapons AN/PVS-2, AN/PVS-2A, and AN/PVS-2B TM 11-5855-203-23, Night Vision Sight, Individual Served Weapons AN/PVS-2, AN/PVS-2A, and AN/PVS-2B

c. National Stock Numbers. National stock numbers (NSN's) that are missing from P source coded items have been applied for and will be added to this TM by future change/revision when they are entered in the Army Master Data File (AMDF). Until the NSN's are established and published, submit exception requisitions to: Commander, US Army Communications-Electronics Command and Fort Monmouth, ATTN: AMSEL-LC-MM, Fort Monmouth, NJ 07703-5000 for the part to support your equipment.

6. How to Locate Repair Parts

a. When National stock number or part number is not known.

(1) First. Using the table of contents, determine the assembly group or subassembly group to which the item belongs. This is necessary since figures are prepared for assembly groups and subassembly groups, and listings are divided into the same groups.

(2) Second. Find the figure covering the assembly group or subassembly group to which the item belongs.

(3) Third. Identify the item on the figure and note the item number.

(4) Fourth. Refer to the Repair Parts List for the figure to find the part number for the item number noted on the figure.

(5) Fifth. Refer to the Part Number Index to find the NSN, if assigned.

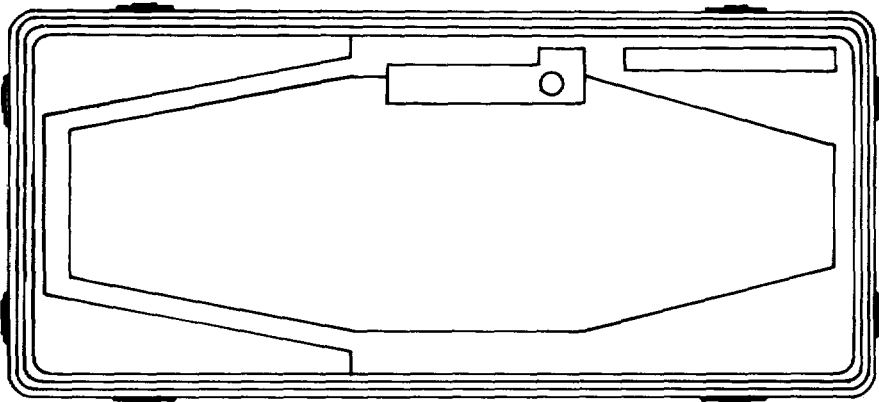
b. When National stock number or part number is known.

(1) First. Using the index of National stock numbers and part numbers, find the pertinent National stock number or part number. The NSN index is in National item identification number (NIIN) sequence (para 4a(1)). The part numbers in the part number index are listed in ascending alphanumeric sequence (para 4b). Both indexes cross-reference you to the illustration figure and item number of the item you are looking for.

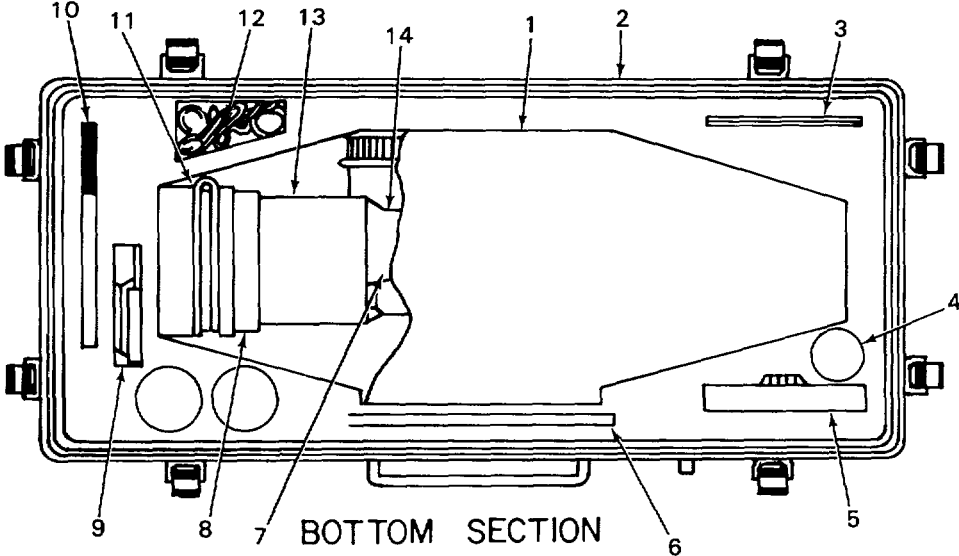
(2) Second. After finding the figure and item number, verify that the item is the one you're looking for, then locate the item number in the repair parts list for the figure.

7. Abbreviations

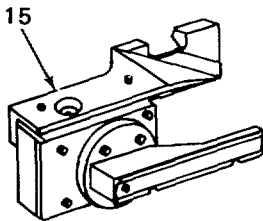
Not applicable.



TOP SECTION



BOTTOM SECTION



CEOBL001

Figure 1. Night Vision Sight, Individual Served Weapon AN/PVS-2, AN/PVS-2A, and AN/PVS-2B

SECTION II					
(1)	(2)	(3)	(4)	(5)	(6)
ITEM	SMR	FSCM	PART	DESCRIPTION AND USABLE ON CODES (UOC)	QTY
NO	CODE	FSCM	NUMBER		
				GROUP 00 NIGHT VISION SIGHT, INDIVIDUAL SERVED WEAPON AN/PV-2,PVS-2, A/PVS-2A, AND AN/PVS-2B	
				FIGURE 1	
1	PAOFZ	80063	SC-D-614667	CASE,CARRYING SEE FIGURE 2 FOR..... BREAKDOWN	1
2	PAOZZ	80063	SC-D-614669	CASE,CARRYING AND S	1
3	PAOZZ	80064	1940722	KEY,SOCKET HEAD SCR	1
4	PAOZA	80058	BA-1100/U	BATTERY, NONRECHARG	1
				UOC:BDH, CFE	
5	PAOFF	80063	SC-C-607230	ADAPTER ASSEMBLY,SI SEE FIGURE 12..... FOR BREAKDOWN.....	1
6	PAOZZ	06650	354	PAPER,LENS.....	1
7	PAFDA	80058	MX-850a A/UV	IMAGE INTENSIFIER,N SEE FIGURE 3..... FOR BREAKDOWN.....	1
				UOC: CFE	
8	PAOFA	80058	MX-7833/PVS-2	NIGHT VISION SIGHT SEE FIGURE 4..... FOR BREAKDOWN.....	1
				UOC: CNW	
9	PAOFF	80063	SC-C-607130	MOUNT ASSEMBLY M14 SEE FIGURE 13..... FOR BREAKDOWN.....	1
10	PAOZZ	24608	TSY7106	BRUSH,DUSTIN G,LENS.....	1
11	PAOZZ	80063	SC-C-614684-1	CAP,COVER ASSE MBLY.....	1
12	PAOZZ	80063	SC-D-614668	STRAP ASSEMBLY, HAND.....	1
13	PAOFA	80058	MX-7833A/PVS-2	NIGHT VISION SIGHT SEE FIGURE 4..... FOR BREAKDOWN.....	1
				UOC:BDH, CFE	
14	PAFDA	80058	MX-8501/UV	IMAGE INTENSIFIER A SEE FIGURE 3..... FOR BREA KDOWN.....	1
				UOC:BDH, CNW	
15	PAOOO	80058	MT-4558/PVS-2	BRACKET ASSY M67 SEE FIGURE 14 FOR..... BREAKDOWN	1

END OF FIGURE

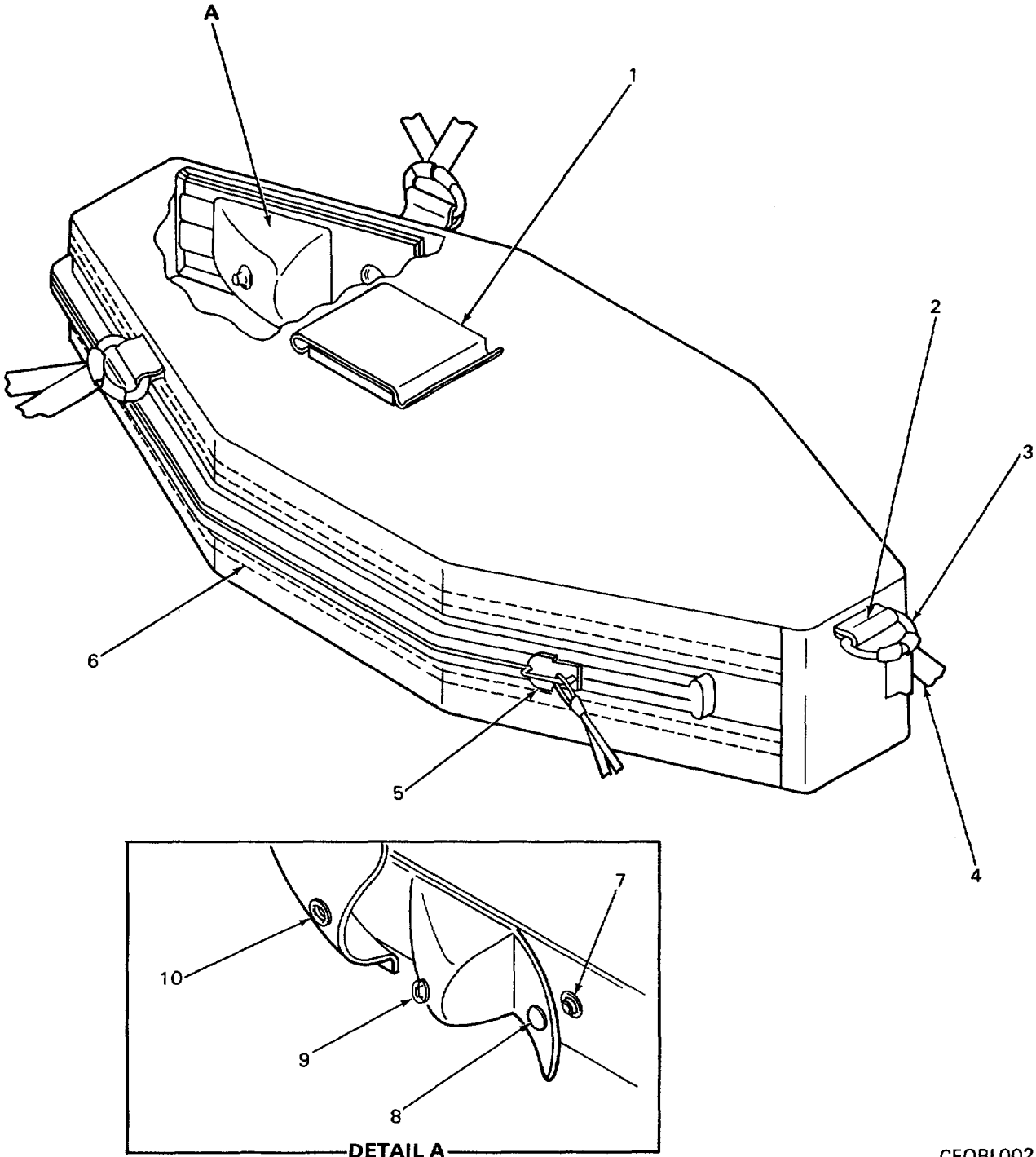


Figure 2. Case, Night Vision Sight CY-63021PVS-2

CEOBL002

SECTION II

TM 11-5855-203-23P

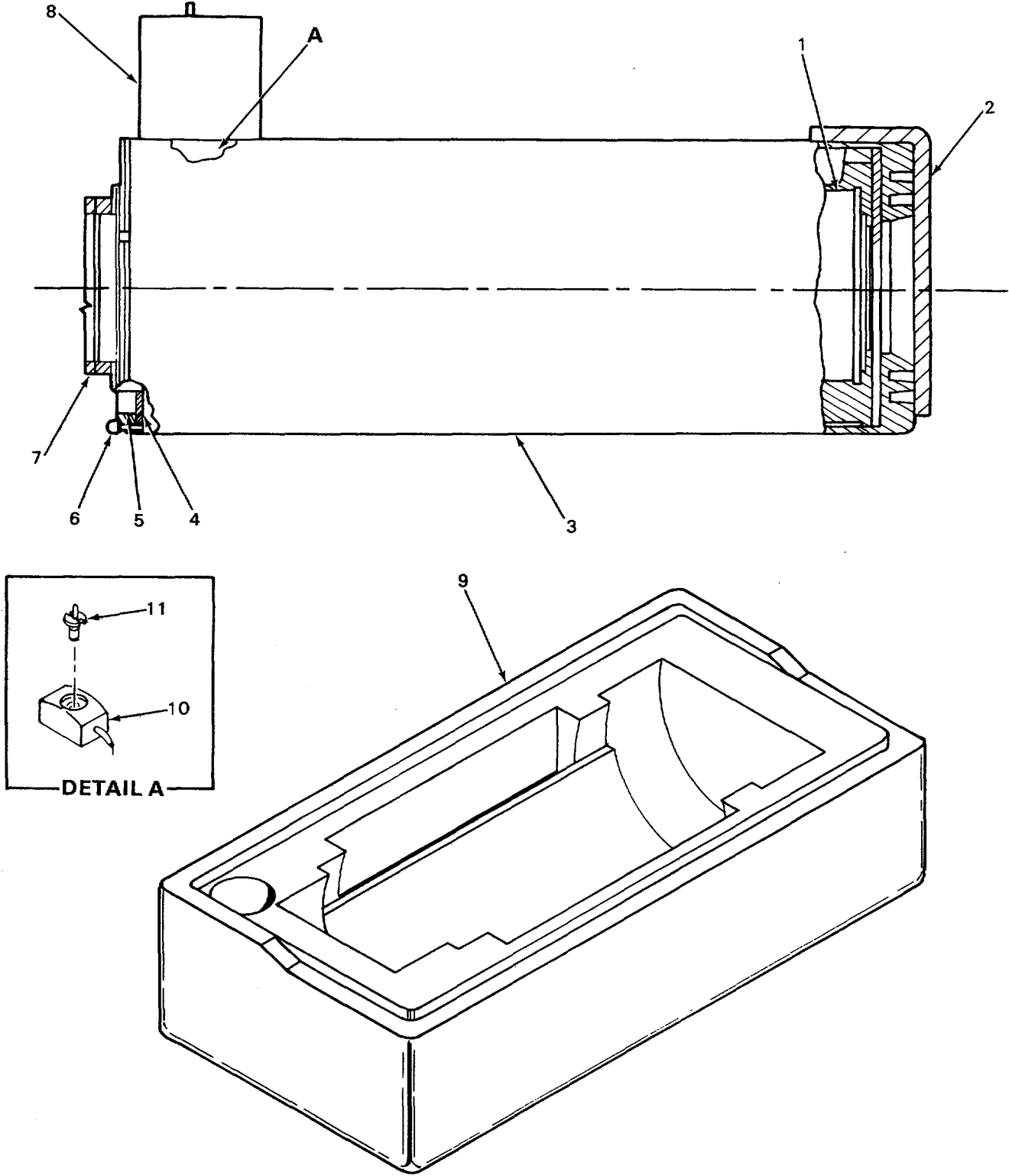
(1) ITEM NO	(2) SMR CODE	(3) FSCM	(4) PART NUMBER	(5) DESCRIPTION AND USABLE ON CODES (UOC)	(6) QTY
-------------------	--------------------	-------------	-----------------------	--	------------

GROUP 01 CASE, NIGHT VISION SIGHT
CY-6302/PVS-2

FIGURE 2

1	PAFZZ	81349	MILH9890TYPE10	KEEPER,BELT-STRAP	2
2	XBFZZ	81349	MILC43006TYPE1 ASS1	CL CLOTH,LAMINATED.....	V
3	PAFZZ	96906	MS51925-4	RING,DEE.....	3
4	XBFZZ	81349	MILT5038TYPE3	TAPE,TEXTILE	V
5	XBFZZ	80063	SC-B-614700	FASTENER,SLIDE,INTE	1
6	XBFZZ	81348	VT295TYPEICLASS1 SIZEFF	THREAD	V
7	PAFZZ	88044	AN227-12B	SOCKET,SNAP FASTENE.....	1
8	PAFZZ	88044	AN227-11B	CAP,SNAP FASTENER.....	1
9	PAFZZ	88044	AN227-14B	POST,SNAP FASTENER	1
10	PAFZZ	88044	AN227-13	STUD,SNAP FASTENER	1

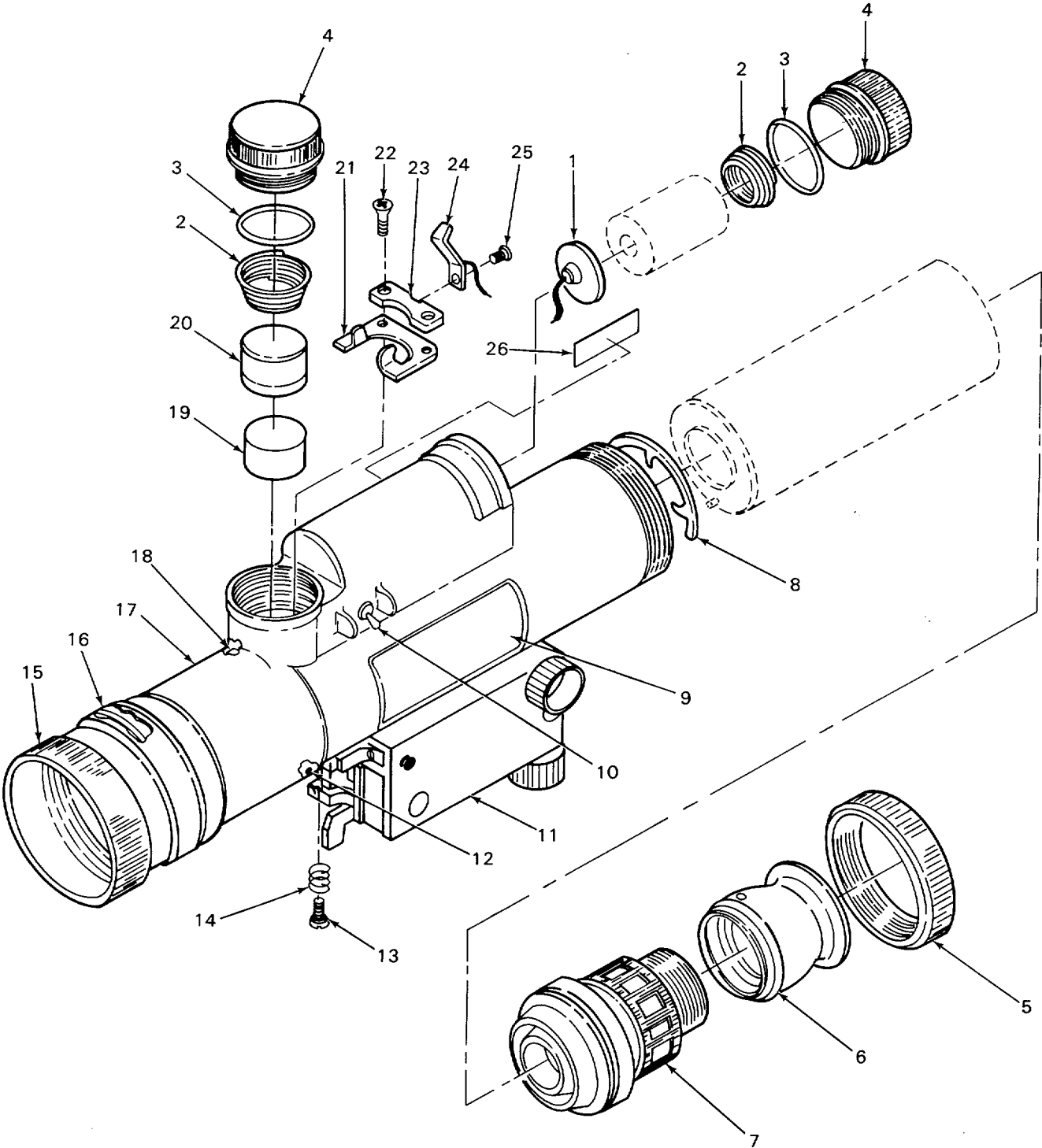
END OF FIGURE



CEOBL003

Figure 3. Image Intensifier Assembly

SECTION II					
(1)	(2)	(3)	(4)	(5)	(6)
ITEM	SMR	FSCM	PART	DESCRIPTION AND USABLE ON CODES (UOC)	QTY
NO	CODE		NUMBER		
GROUP 02 IMAGE INTENSIFIER ASSEMBLY					
FIGURE 3					
1	XBDZZ	80063	SC-D-611728	MOLDED ASSY,IMAGE.....1 UOC:BDH, CNW	1
1	XBDZZ	80063	SC-D-611782	MOLDED ASSY,IMAGE.....1 UOC: CFE	1
2	PAOZZ	80063	SC-B-611742-2	CAP,ELECTRICAL	1
3	PADZZ	80063	SC-D-611760	IMAGE INTENSIFIER H	1
				UOC:BDH, CNW	
3	PADZZ	80063	SC-D-611781-1	HOUSING,IMAGE INTEN.....1 UOC: CFE	1
4	PADZZ	80063	SC-B-611730	SPACER,OPTICAL ELEM.....1	1
5	PADZZ	80063	SC-C-611740-3	RETAINER,OPTICAL EL.....1 UOC:BDH, CNW	1
5	PADZZ	80063	SC-C-611740-4	RETAINER INTENSIFIE	1
				UOC: CFE	
6	XBDZZ	80063	SC-B-611732	PIN,ALIGNMENT	1
7	PAOZZ	80063	SC-B-611742-1	CAP,ELECTRICAL	1
8	PADZZ	80063	SC-C-611787	ADAPTER,CONNECTOR.....1 UOC: CFE	1
9	PADZZ	80063	SC-D-611726	CONTAINER,HALF,IMAG	2
				UOC:BDH, CNW	
9	PADZZ	80063	SC-D-611783	CONTAINER,HALF,IMAG	2
				UOC: CFE	
10	PADZZ	80063	SC-C-611734	CONNECTOR INPUT	1
				UOC:BDH, CNW	
11	PADZZ	80063	SC-C-611733	PIN	1
				UOC:BDH, CNW	
END OF FIGURE					



CEOBL004

Figure 4. Night Vision Sight Subassembly

SECTION II

TM 11-5855-203-23P

(1) ITEM NO	(2) SMR CODE	(3) FSCM	(4) PART NUMBER	(5) DESCRIPTION AND USABLE ON CODES (UOC)	(6) QTY
GROUP 03 NIGHT VISION SIGHT SUBASSEMBLY					
FIGURE 4					
1	PAFZZ	80063	SC-B-614639	TERMINAL ASSEMBLY.....	1
2	PAFZZ	80063	SC-C-614643	SPRING	2
3	PAFZZ	96906	M59021-030	PACKING,PREFORMED.....	2
4	PAFZZ	80063	SC-C-614598	CAP,SCOPE ASSEMBLY.....	2
5	PAFZZ	80063	SC-D-614600-1	NUT,RETAINING	1
6	PAFZZ	80063	SC-D-614703	EYESSHIELD ASSEMBLY	1
7	PAFDA	80063	SC-D-614601	EYEPIECE ASSEMBLY,O SEE FIGURE 6.....	1
				FOR BREAKDOWN.....	
8	PAFZZ	80063	SC-C-614649	RING,RETAINING	1
9	MDFZZ	80063	SC-C-647741	PLATE,INSTRUCTION (FOR	1
				INSTRUCTIONS SEE SB 11-631.).....	
				UOC:BDH, CFE	
10	PAFZZ	81349	M524655-221	SWITCH,TOGGLE	1
11	PAOFF	80063	SC-D-614644	BORESIGHT ASSEMBLY SEE FIGURE 5.....	1
				FOR BREAKDOWN.....	
12	PAOZZ	96906	MS51040-226	SETSCREW	1
				UOC:BDH, CFE	
13	PAFZZ	80063	SC-B-614632	SCREW,MACHINE	2
14	PAFZZ	96906	M521208F4-10	INSERT,SCREW THREAD	2
15	PAFDD	80063	SC-D-614577	OBJECTIVE LENS ASSY SEE FIGURE 9.....	1
				FOR BREAKDOWN.....	
				UOC: CNW	
15	PAFDD	80063	SC-D-645704	OBJECTIVE LENS ASSY SEE FIGURE 10.....	1
				FOR BREAKDOWN.....	
				UOC:BDH, CFE	
16	PAFZZ	96906	MS9021-041	PACKING,PREFORMED.....	1
17	PAFZZ	80063	SC-D-614596	HOUSING,MAIN	1
				UOC: CNW	
17	PAFZZ	80063	SC-D-614596-2	MAIN HOUSING	1
				UOC:BDH, CFE	
18	XBFZZ	80063	SC-B-645706	SHIM	1
				UOC: CNW	
19	PAFZZ	97403	13211E3058	OSCILLATOR,HIGH VOL	1
20	PAFZZ	80063	SC-D-614645	CONTACT ASSEMBLY,EL.....	1
21	PAFZZ	80063	SC-C-614634	CONTACT GROUND OSCI.....	1
22	PAFZZ	96906	M516997-19	SCREW,CAP,SOCKET HE	2
23	PAFZZ	80063	SC-B-614635	BOARD	1
24	PAFZZ	80063	SC-C-614637	SPRING,CONTACT	1
25	XBFZZ	80063	SC-C-645753-15	SCREW,MACHINE	1
				UOC: CNW	
25	PAFZZ	80063	SC-C-645753-2	SCREW,MACHINE	1
				UOC:BDH, CFE	
26	MDFZZ	80063	SC-B-614599	PLATE IDENTIFICATIO (SEE SB 11-631).....	1

END OF FIGURE

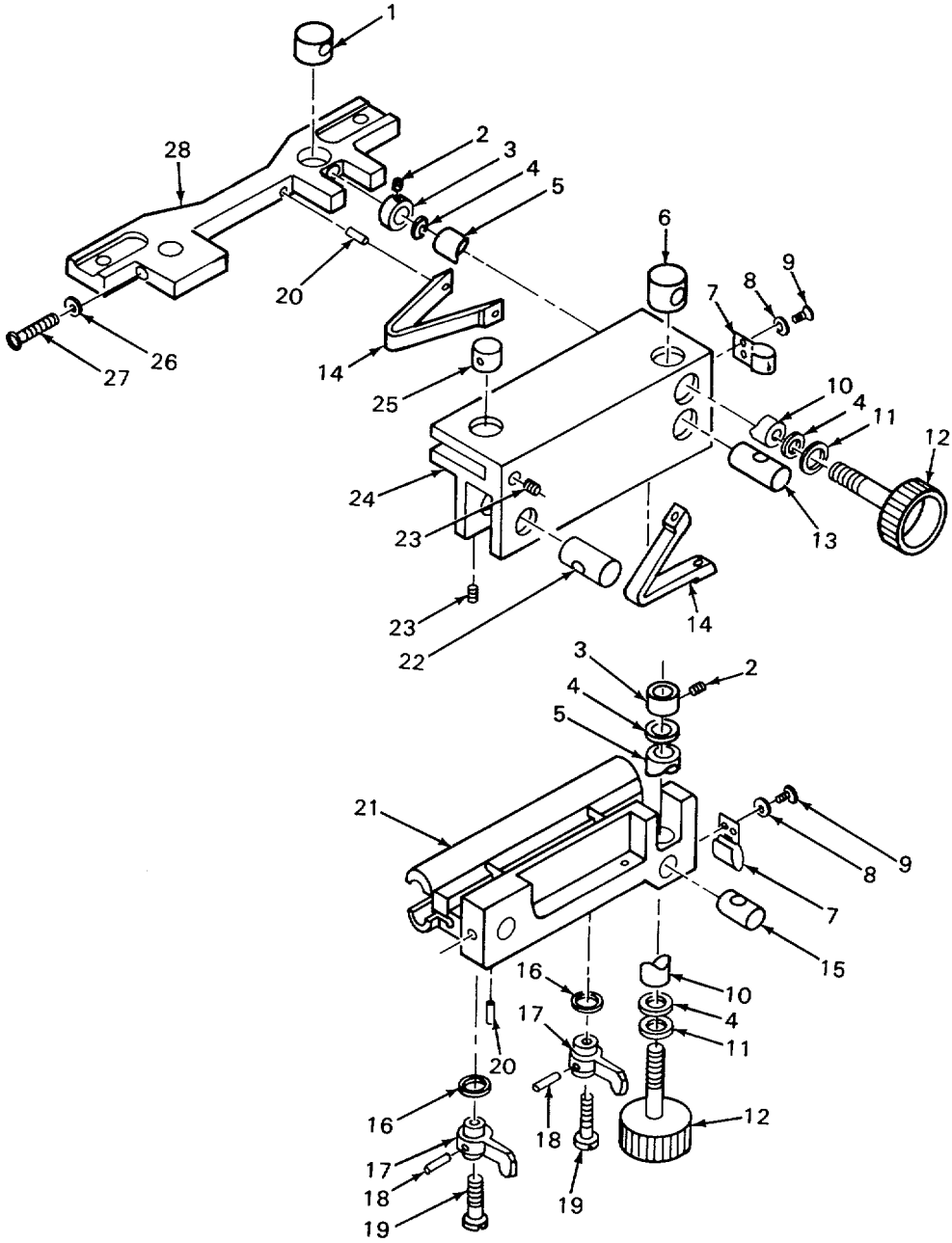


Figure 5. Boresight Assembly

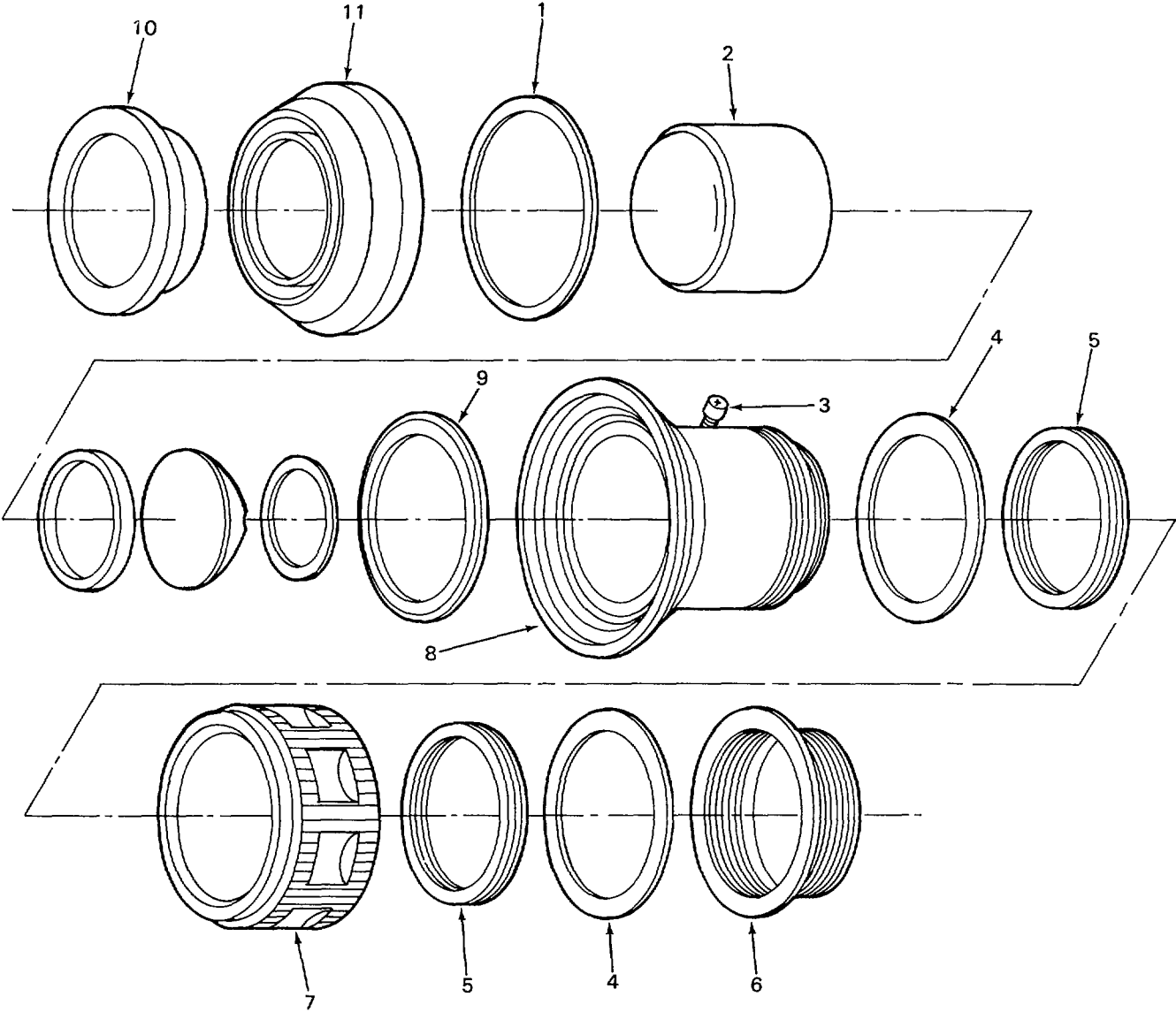
CEOBL005

SECTION II

TM 11-5855-203-23P

(1) ITEM NO	(2) SMR CODE	(3) FSCM	(4) PART NUMBER	(5) DESCRIPTION AND USABLE ON CODES (UOC)	(6) QTY
GROUP 0301 BORESIGHT ASSEMBLY					
FIGURE 5					
1	PAFZZ	80063	SC-B-614651	PIN THREADED AZIMUT	1
2	PAFZZ	88044	AN565BC2H1	SETSCREW	2
3	PAFZZ	80063	SC-B-614658	NUT,BORESIGHT	2
4	PAFZZ	80063	SC-B-614657	WASHER,FLAT	4
5	PAFZZ	80063	SC-B-614666	SPACER CONTOUR	2
6	PAFZZ	80063	SC-B-614652	PIN AZIMUTH	1
7	PAFZZ	80063	SC-C-614663	CLICK,SPRING.....	2
8	XBFZZ	80063	SC-B-645752-153	WASHER,LOCK	4
9	PAFZZ	80063	SC-C-645753-2	SCREW,MACHINE	4
				UOC:BDH, CFE	
10	PAFZZ	80063	SC-B-614656	SPACER CONTOUR OUTS	2
11	PAFZZ	96906	MS15795-908	WASHER,FLAT	2
12	PAFZZ	80063	SC-D-614688	KNOB.....	2
13	PAFZZ	80063	SC-B-614654	PIN THREADED ELEVAT	1
14	PAFZZ	80063	SC-D-614689	SPRING,BORESIGHT	2
15	PAFZZ	80063	SC-B-614655	PIN ELEVATION	1
16	PAFZZ	80063	SC-B-614660	RECESSED WASHER	2
17	PAFZZ	80063	SC-C-614661	KNOB.....	2
18	PAFZZ	96906	MS16562-194	PIN,SPRING	2
19	XBFZZ	80063	SC-B-614662	SCREW,LOCKING	2
20	PAFZZ	96906	MS16562-209	PIN,SPRING	5
21	PAFZZ	80063	SC-D-614675	BRACKET,ELEVATION.....	1
22	PAFZZ	80063	SC-B-614653	PIVOT,PIN ELEVATION	1
23	PAFZZ	81352	AN565FC8H4	SETSCREW	2
24	XBFZZ	80063	SC-D-614615	FRAME,BORESIGHT	1
25	PAFZZ	80063	SC-B-614650	PIVOT PIN AZIMUTH	1
26	PAFZZ	96906	M535338-134	WASHER,LOCK	2
27	PAFZZ	96906	MS51957-10	SCREW,MACHINE	2
28	PAFZZ	80063	SC-D-614595	BRACKET,AZIMUTH	1

END OF FIGURE



CEOBLO06

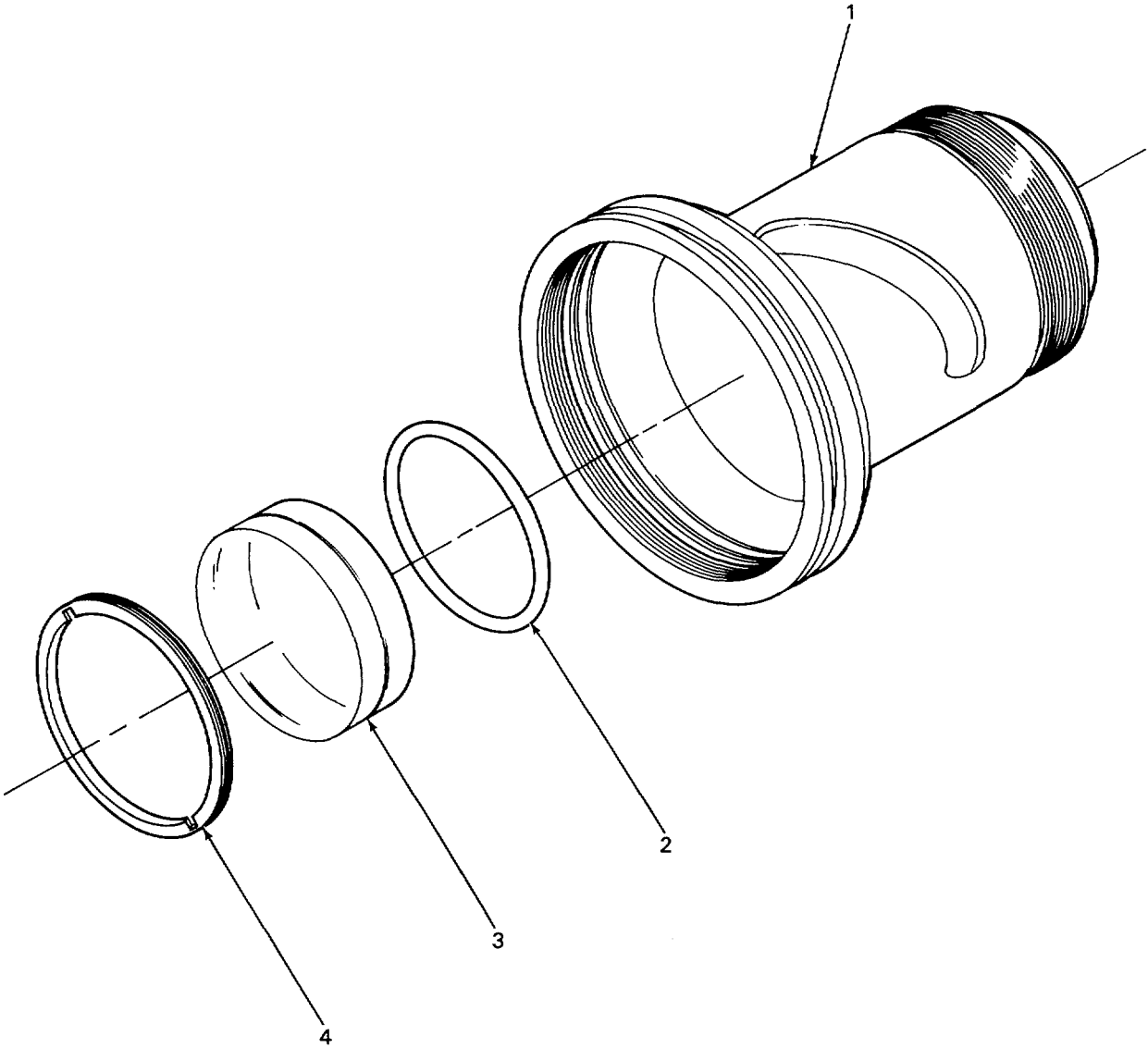
Figure 6. Eyepiece Assembly

SECTION II

TM 11-5855-203-23P

(1) ITEM NO	(2) SMR CODE	(3) FSCM	(4) PART NUMBER	(5) DESCRIPTION AND USABLE ON CODES (UOC)	(6) QTY
GROUP 0302 EYEPIECE ASSEMBLY					
FIGURE 6					
1	PADZZ	96906	MS9021-038	PACKING,PREFORMED	1
2	PADDZ	80063	SC-C-614607	LENS CELL ASSEMBLY SEE FIGURE 8..... FOR BREAKDOWN.....	1
3	PADZZ	80063	SC-B-614627	STUD,DRIVE	1
4	XBDZZ	80063	SC-B-614625	WASHER	2
5	PADZZ	07322	Q4225	QUAD RING.....	2
6	PADZZ	80063	SC-C-614706	RING RETAINING	1
7	PADZZ	80063	SC-D-614628	RING,FOCUSING	1
8	PADDD	80063	SC-D-614616	MAIN BODY ASSEMBLY SEE FIGURE 7..... FOR BREAKDOWN.....	1
9	PADZZ	96906	M59021-035	PACKING,PREFORMED	1
10	PADZZ	80063	SC-D-649064	ADAPTER,EYESHIELD A.....	1
11	PADZZ	80063	SC-C-614602	INSULATOR,EYEPIECE	1

END OF FIGURE



CEOBL007

Figure 7. Main Body Assembly

SECTION II

TM 11-5855-203-23P

(1) ITEM NO	(2) SMR CODE	(3) FSCM	(4) PART NUMBER	(5) DESCRIPTION AND USABLE ON CODES (UOC)	(6) QTY
-------------------	--------------------	-------------	-----------------------	--	------------

GROUP 030201 MAIN BODY ASSEMBLY

FIGURE 7

1	PADZZ	80063	SC-D-614620	BODY,EYEPiece	1
2	PADZZ	80063	SC-B-614622	GASKET	1
3	PADZA	80063	SC-C-614617	LENS,OPTICAL INSTRU.....	1
4	PADZZ	80063	SC-C-614621	NUT,RETAINING	1

END OF FIGURE

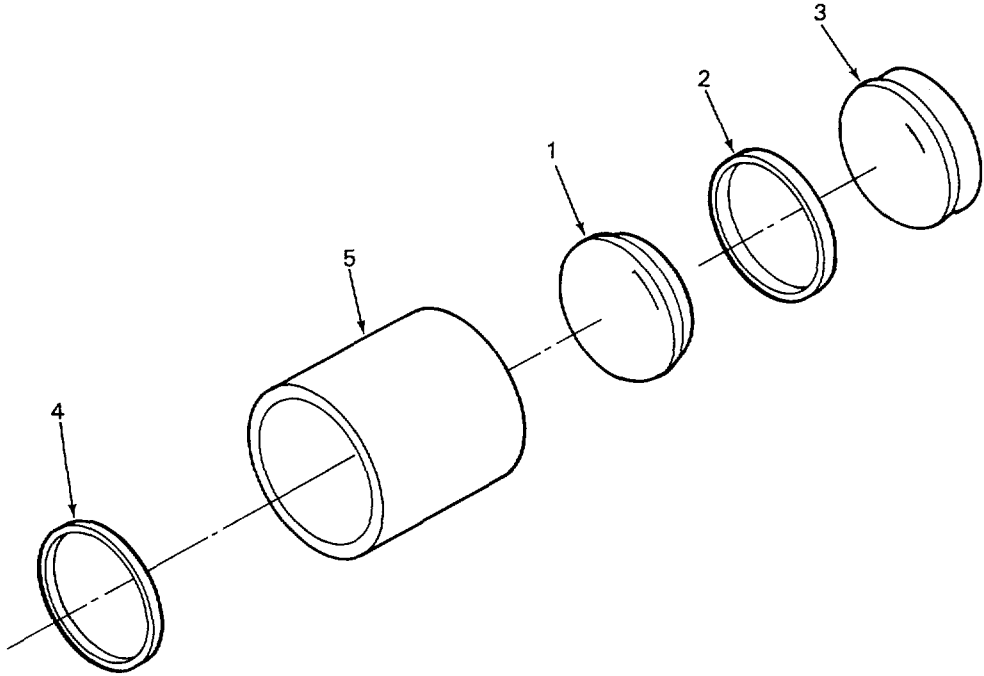


Figure 8. Cell Lens Assembly

CEOBL008

SECTION II

TM 11-5855-203-23P

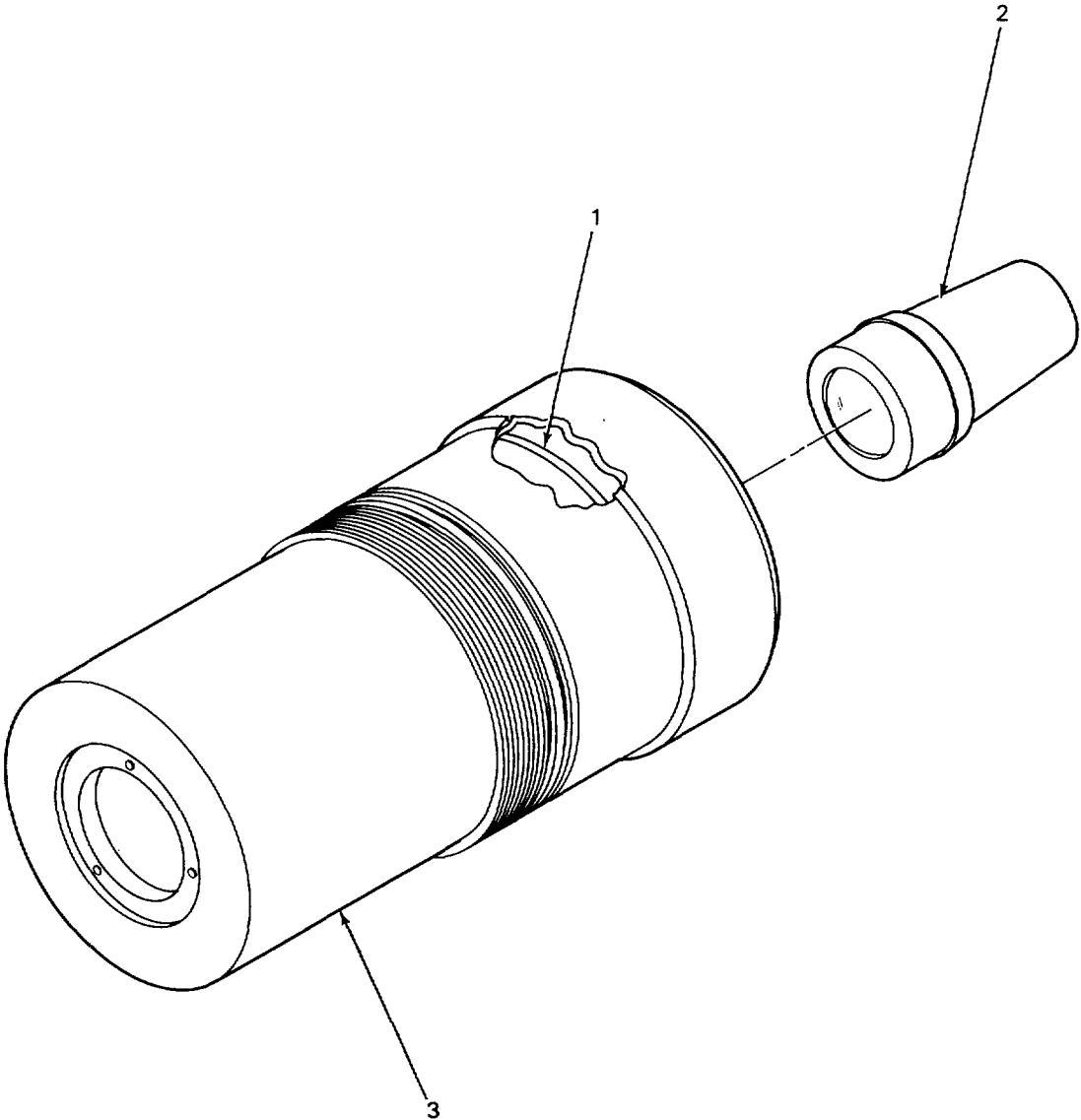
(1) ITEM NO	(2) SMR CODE	(3) FSCM	(4) PART NUMBER	(5) DESCRIPTION AND USABLE ON CODES (UOC)	(6) QTY
-------------------	--------------------	-------------	-----------------------	--	------------

GROUP 030202 CELL LENS ASSEMBLY

FIGURE 8

1	PADZA	80063	SC-C-614614	LENS,OPTICAL INSTRU.....	1
2	PADZZ	80063	SC-C-614611	SPACER,OPTICAL ELEM.....	1
3	PADZA	80063	SC-B-614608	LENS,OPTICAL INSTRU.....	1
4	XBDZZ	80063	SC-C-614613	RETAINER.....	1
5	XBDZZ	80063	SC-D-614612	CELL,EYEPIECE.....	1

END OF FIGURE



CEOBL009

Figure 9. Objective Lens Assembly (used on AN/PVS-2 only)

SECTION II

TM 11-5855-203-23P

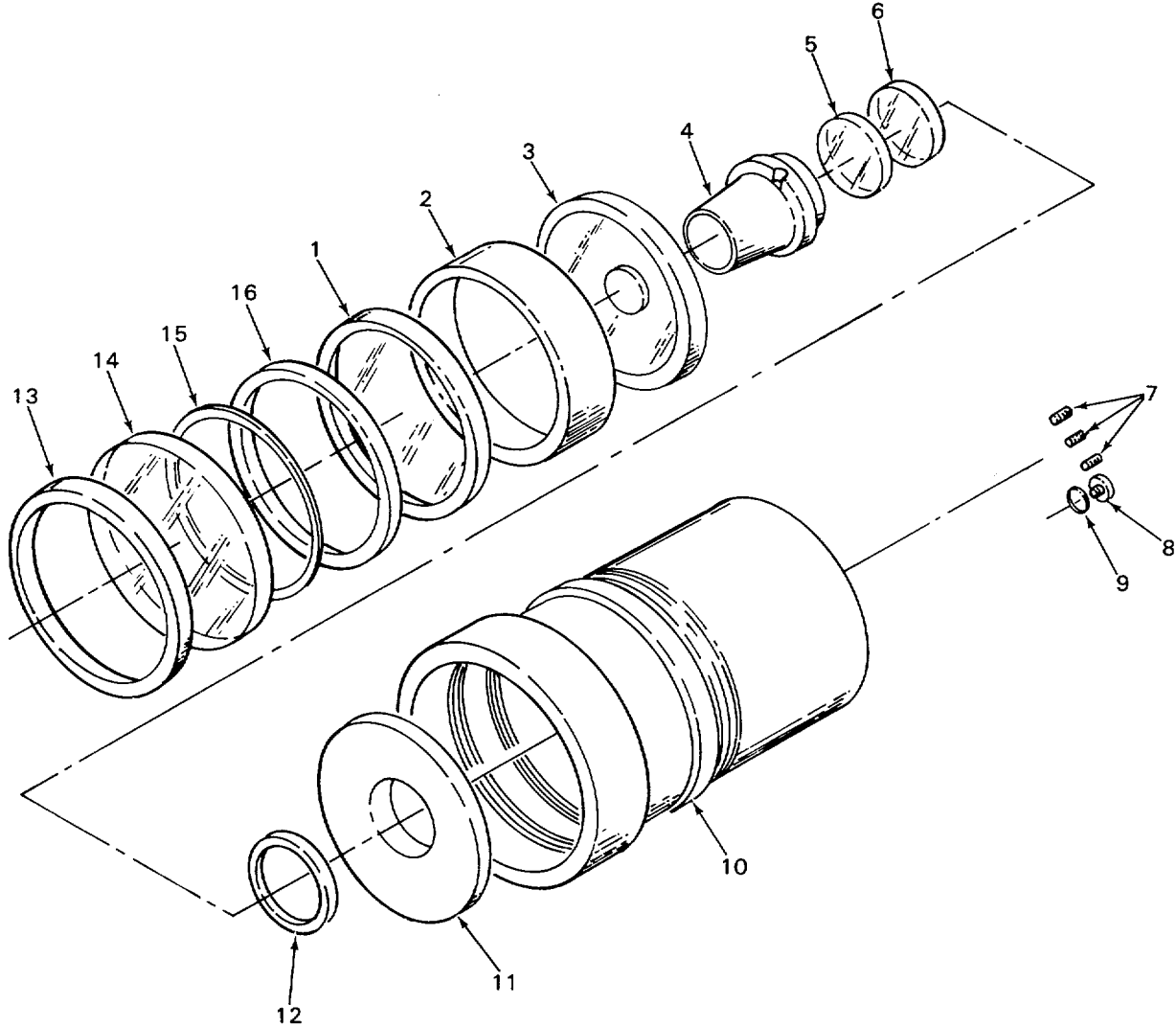
(1) ITEM NO	(2) SMR CODE	(3) FSCM	(4) PART NUMBER	(5) DESCRIPTION AND USABLE ON CODES (UOC)	(6) QTY
-------------------	--------------------	-------------	-----------------------	--	------------

GROUP 0303 OBJECTIVE LENS ASSEMBLY
(USED ON AN/PVS-2 ONLY)

FIGURE 9

1	PADZZ	80063	SC-B-614590	PACKING,PREFORMED..... UOC: CNW	1
2	XBDDD	80063	SC-C-614583	CONE ASSY,OBJECTIVE SEE FIGURE 11 FOR BREAKDOWN..... UOC: CNW	1
3	XBDZZ	80063	SC-D-614592	CELL,OBJECTIVE LENS..... UOC: CNW	1

END OF FIGURE



CEOBL010

Figure 10. Objective Lens Assembly

SECTION II

TM 11-5855-203-23P

(1) ITEM NO	(2) SMR CODE	(3) FSCM	(4) PART NUMBER	(5) DESCRIPTION AND USABLE ON CODES (UOC)	(6) QTY
-------------------	--------------------	-------------	-----------------------	--	------------

OBJECTIVE LENS ASSEMBLY

FIGURE 10

1	PADZZ	80063	SC-C-614579	ELEMENT,SECOND.....	1
2	PADZZ	80063	SC-C-614587	SPACER,THIRD ELEMEN	1
3	PADZZ	80063	SC-C-614580	LENS-MIRROR,OPTICAL	1
4	PADZZ	80063	SC-D-645702	CONE.....	1
				UOC:BDH, CFE	
5	PADZZ	80063	SC-C-614581	ELEMENT FIFTH.....	1
				UOC:BDH, CFE	
6	PADZZ	80063	SC-C-614582	ELEMENT SIXTH	1
				UOC:BDH, CFE	
7	PADZZ	96906	MS51029-1	SETSCREW	3
8	XBDZZ	80063	SC-C-614591	PLUG,MACHINE THRE AD.....	1
9	PADZZ	96906	MS29513-012	PACKING,PREFORMED	1
10	PADZZ	80063	SC-D-645703	CELL,OPTICAL ELEMEN.....	1
11	PADZZ	80063	SC-C-614584	ELEMENT,FOURTH	1
12	PADZZ	80063	SC-B-614702	GASKET	1
13	PADZZ	80063	SC-C-614588	RETAINER.....	1
14	PADZZ	80063	SC-C-614578	CELL,OPTICAL ELEMEN.....	1
15	PADZZ	96906	MS9021-042	PACKING,PRE FORMED.....	1
				UOC:BDH, CFE	
16	PADZZ	80063	SC-C-614589	RETAINER,SECOND ELE.....	1

END OF FIGURE

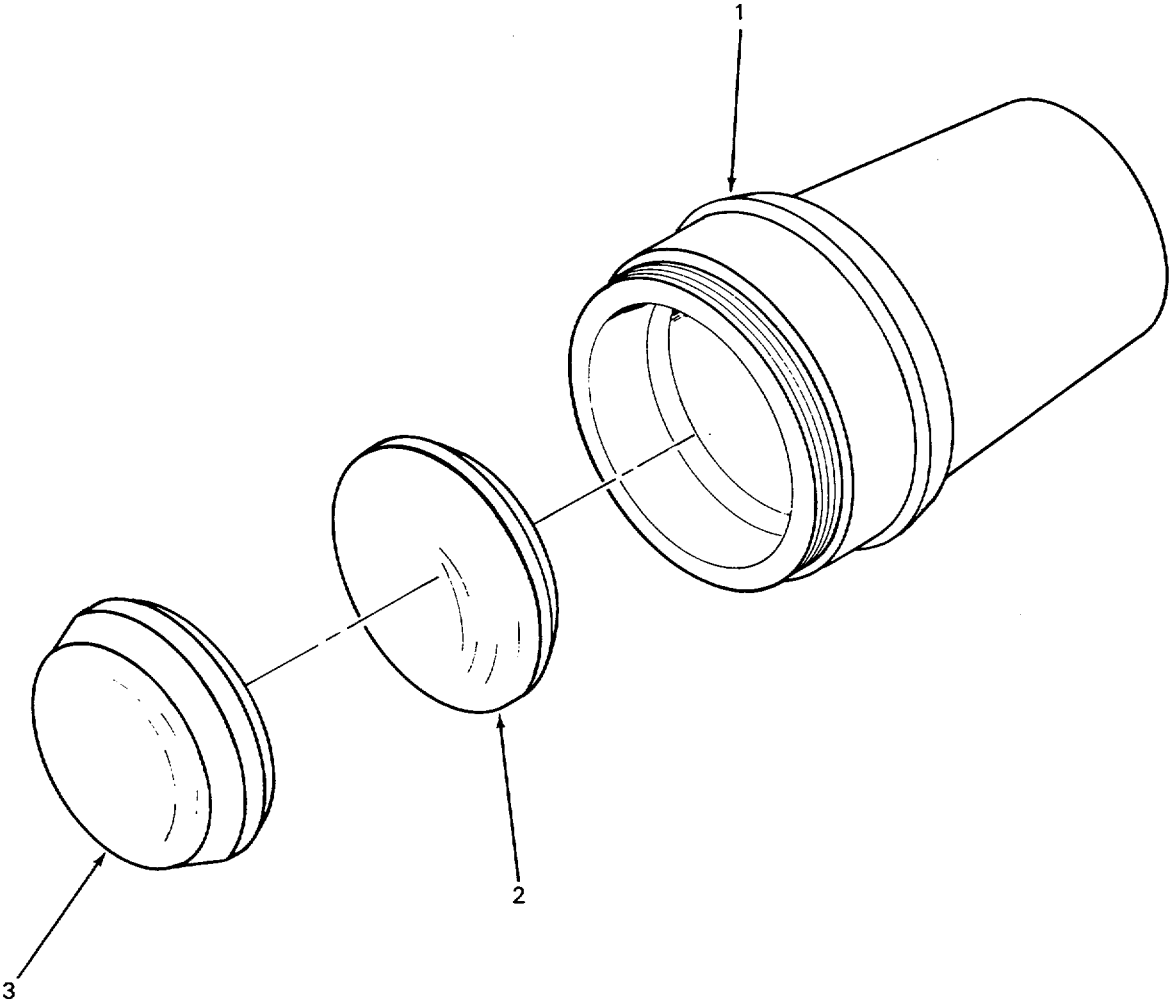


Figure 11. Cone Assembly
(used on AN/PVS-2 only)

CEOBL011

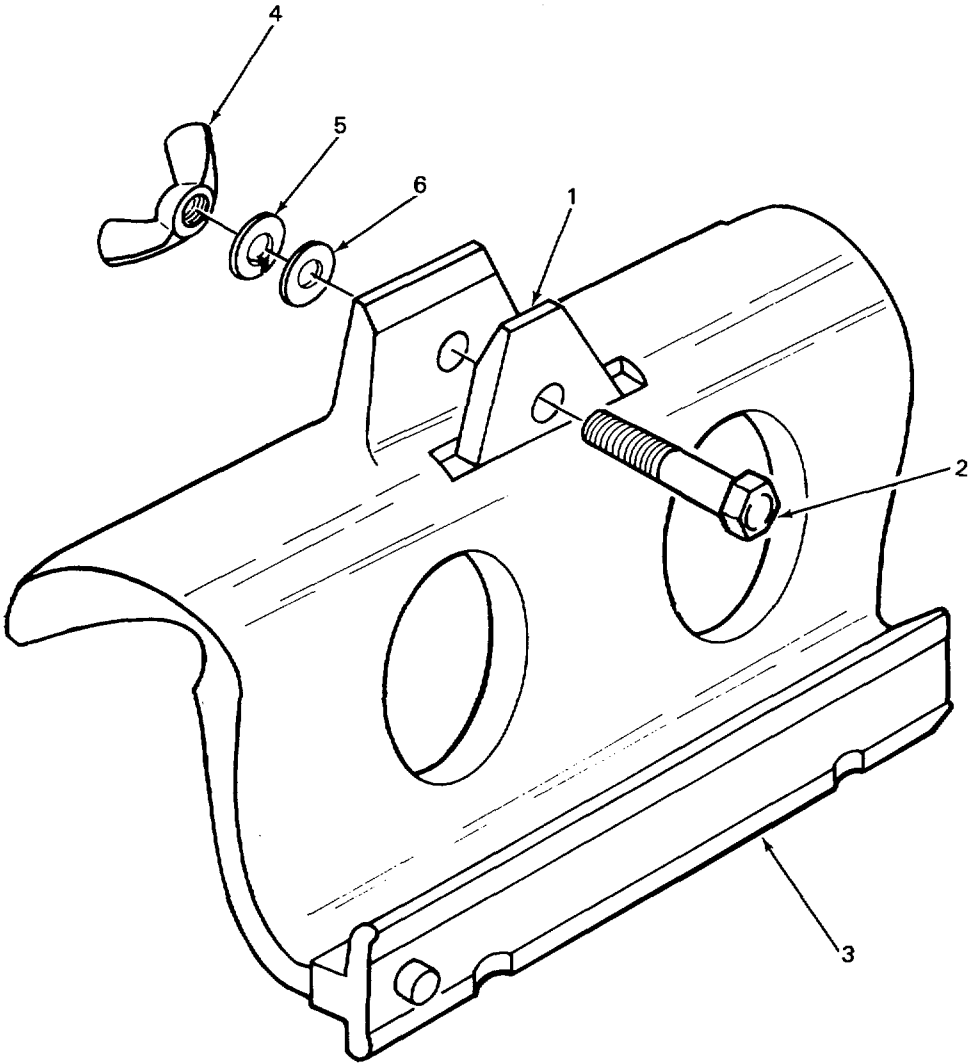
SECTION II					
(1)	(2)	(3)	(4)	(5)	(6)
ITEM	SMR	FSCM	PART	DESCRIPTION AND USABLE ON CODES (UOC)	QTY
NO	CODE		NUMBER		

GROUP 030301 CONE ASSEMBLY (USED ON AN/PVS-2 ONLY)

FIGURE 11

1	XBDZZ	80063	SC-D-614585	CONE,BAFFLE-REAR..... UOC: CNW	1
2	PADZZ	80063	SC-C-614581	ELEMENT FIFTH..... UOC: CNW	1
3	PADZZ	80063	SC-C-614582	ELEMENT SIXTH UOC: CNNW	1

END OF FIGURE



CEOBL012

Figure 12. Adapter Assembly M16

SECTION II

TM 11-5855-203-23P

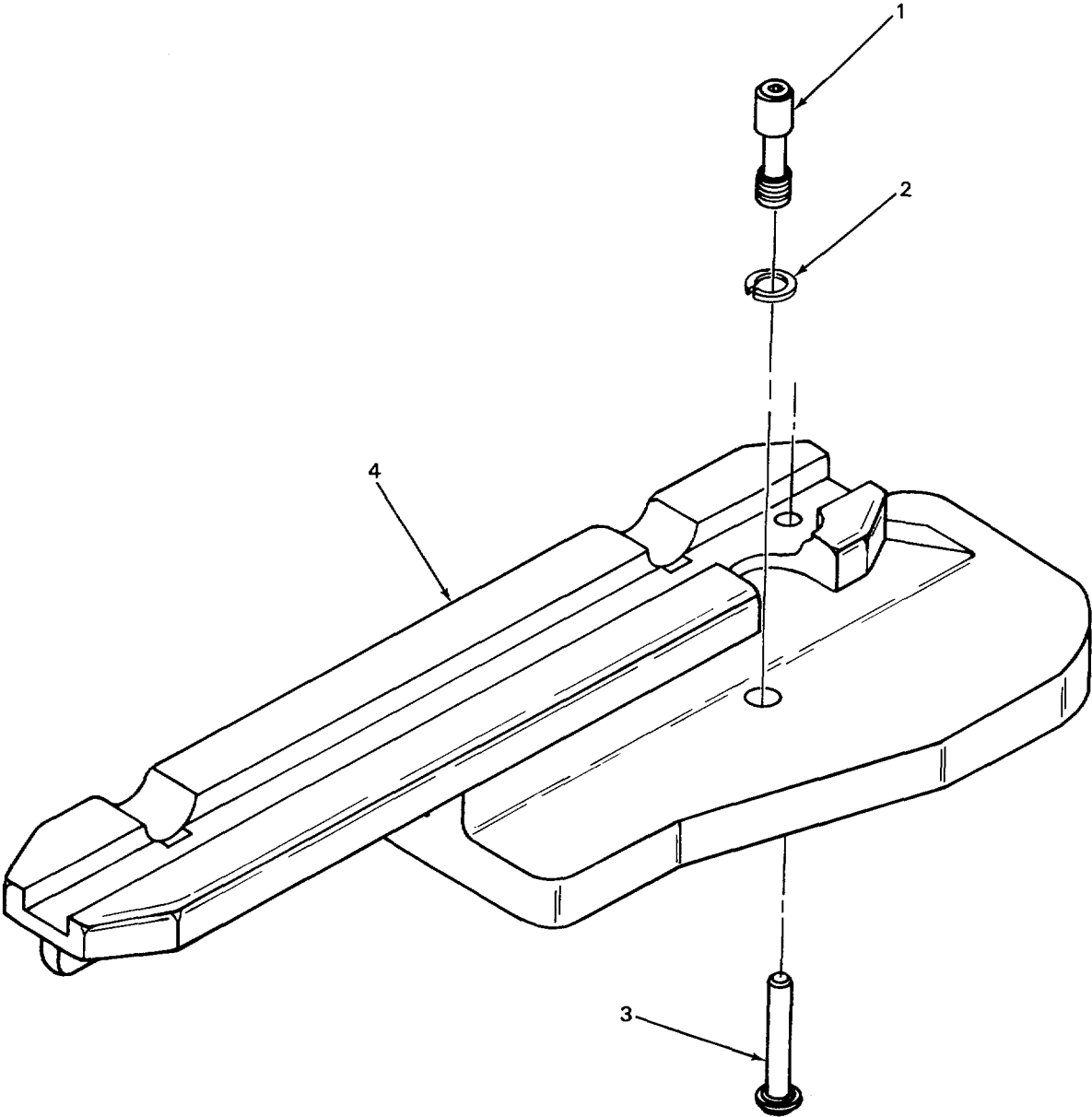
(1) ITEM NO	(2) SMR CODE	(3) FSCM	(4) PART NUMBER	(5) DESCRIPTION AND USABLE ON CODES (UOC)	(6) QTY
-------------------	--------------------	-------------	-----------------------	--	------------

GROUP 04 ADAPTER ASSEMBLY M16

FIGURE 12

1	PAFZZ	80063	SC-C-607232	HOLDER,OPTICAL ELEM.....	1
2	PAFZZ	80063	SC-B-645759-312	SCREW,CAP,HEXAGON N	1
3	PAFZZ	80063	SC-C-607230	ADAPTER ASSEMBLY,SI	1
4	XBFZZ	80063	SC-B-607255	NUT,WING,PLAIN	1
5	PAFZZ	80063	SC-B-645752-158	WASHER,LOCK	1
6	PAFZZ	80063	SC-B-645751-809	WASHER,FLAT	1

END OF FIGURE



CEOBL013

Figure 13. Mount Assembly M14

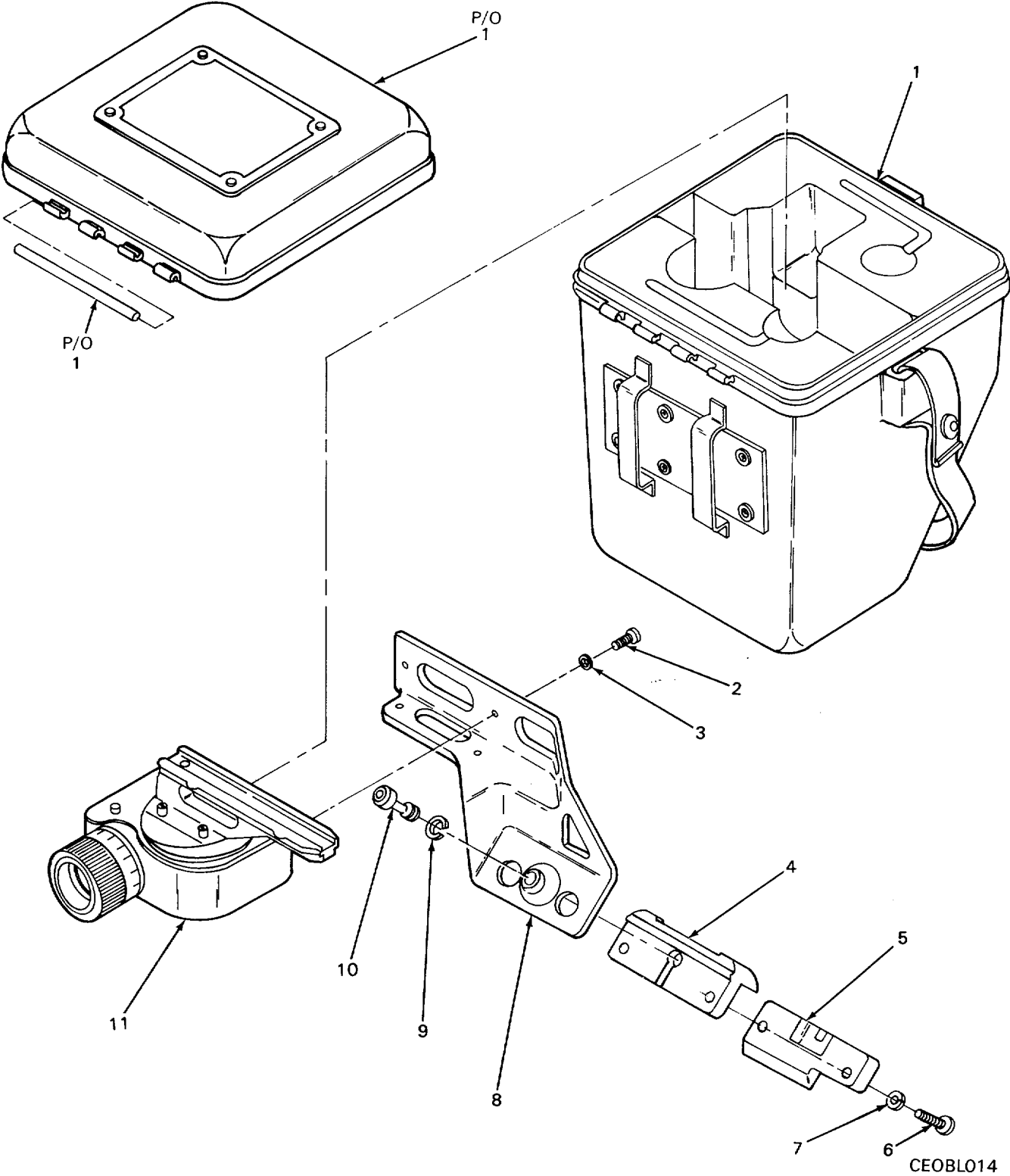
SECTION II					
(1)	(2)	(3)	(4)	(5)	(6)
ITEM	SMR		PART		
NO	CODE	FSCM	NUMBER	DESCRIPTION AND USABLE ON CODES (UOC)	QTY

GROUP 05 MOUNT ASSEMBLY M14

FIGURE 13

1	XBFZZ	80063	SC-C-607134	SCREW,CAP,SOCKET HE	1
2	XBFZZ	80063	SC-B-607133	WASHER,LOCK	1
3	XBFZZ	80063	SC-B-607131	PIN,DOWEL.....	1
4	XBFZZ	80063	SC-D-607132	MOUNT,RECEIVER	1

END OF FIGURE



CEOBL014

Figure 14. Mount, Telescope M67

SECTION II					
(1)	(2)	(3)	(4)	(5)	(6)
ITEM	SMR	FSCM	PART	DESCRIPTION AND USABLE ON CODES (UOC)	QTY
NO	CODE		NUMBER		
GROUP 06 MOUNT, TELESCOPE M67					
FIGURE 14					
1	PAOZO	80063	SC-D-647514-2	CASE,CARRYING,MOUNT	1
2	PAOZZ	96906	MS16995-25B	SCREW,CAP,SOCKET HE	4
3	PAOZZ	96906	MS35338-137B	WASHER,LOCK	4
4	PAOZZ	80063	SC-D-647549-1	BRACKET,MOUNT	1
5	PAOZZ	80063	SC-C-647551	CLAMP,TELESCOPE,MOU.....	1
6	PAOZZ	96906	MS16995-3S8B	SCREW,CAP,SOCKET HE	2
7	PAOZZ	96906	MS35338-138B	WASHER,LOCK	2
8	PAOZZ	80063	SC-D-647548	BRACKET,TELESCOPE,M	1
9	PAOZZ	96906	MS35338-139B	WASHER,LOCK	1
10	PAOZZ	80063	SC-B-647552	SCREW,EXTERNALLY RE	1
11	PBOZD	80063	SC-D-647530-1	TRANSMISSION,MECHAN.....	1

END OF FIGURE

CROSS- REFERENCE-INDEXES
NATIONAL STOCK NUMBER INDEX

STOCK NUMBER	FIG.	ITEM	STOCK NUMBER	FIG.	ITEM
5310-00-045-5207	5	11	5325-00-276-4966	2	7
5305-00-054-5645	5	27	5325-00-276-5876	2	10
5315-00-058-9727	5	20	5330-00-316-0258	6	5
5330-00-060-0602	6	1	5855-00-400-2619	1	13
5855-00-087-1540	10	3	5855-00-400-2620	4	17
5855-00-087-1543	10	6	5855-00-400-2621	4	15
	11	3	5855-00-400-2622	10	10
5855-00-087-1548	10	5	5855-00-400-2624	10	4
	11	2	5855-00-405-0409	1	15
5855-00-087-1555	10	2	5305-00-417-5251	14	2
5855-00-087-1556	10	11	5935-00-451-5226	3	8
5855-00-087-1565	12	1	5305-00-478-6632	14	6
5855-00-087-1566	5	10	5330-00-551-8252	4	3
5855-00-087-1569	5	5	5305-00-638-1198	10	7
5940-00-087-1570	4	23	5330-00-729-4655	4	16
5355-00-087-2770	5	17	5340-00-753-5580	2	1
5855-00-087-2948	1	14	5855-00-779-2848	4	4
5310-00-087-3055	12	5	5855-00-782-7546	1	11
5310-00-087-3057	5	16	5330-00-783-2093	10	12
5305-00-087-3080	12	2	5855-00-791-1628	8	3
5305-00-087-3081	4	25	5855-00-791-1637	8	2
	5	9	5855-00-791-1644	8	1
5855-00-087-6428	10	1	5330-00-804-2747	6	9
5855-00-087-7833	10	16	5330-00-805-8688	10	15
5855-00-091-9126	4	20	5935-00-809-8701	3	10
5855-00-093-5847	14	8	5855-00-832-6512	5	21
5855-00-093-5850	14	5	5855-00-832-6513	5	28
5855-00-107-7992	14	11	5365-00-832-6514	4	8
5855-00-114-4946	14	4	5855-00-832-6516	4	24
5365-00-127-7449	2	3	5855-00-832-6517	4	21
5855-00-134-6233	3	3	5855-00-832-6518	10	13
5855-00-165-3093	6	10	5305-00-832-6522	4	13
5855-00-167-0992	14	1	5855-00-832-6523	1	2
5305-00-167-1141	14	10	5855-00-832-6524	5	3
5855-00-174-3478	3	5	5855-00-832-6525	1	1
5855-00-174-3483	3	3	5315-00-832-6526	5	15
5855-00-177-3502	1	7	5855-00-832-6527	5	13
5855-00-179-4468	3	5	5855-00-832-6528	5	22
5305-00-182-9402	4	12	5315-00-832-6529	5	6
5305-00-187-9895	5	23	5315-00-832-6567	5	1
5855-00-198-3197	3	9	5355-00-832-6568	5	12
5120-00-198-5390	1	3	5855-00-832-6569	5	14
7920-00-205-0565	1	10	5855-00-832-6570	5	25
5310-00-224-0748	14	3	5855-00-832-7287	3	9
5310-00-224-0749	14	7	5310-00-832-8258	6	6
6640-00-240-5851	1	6	5310-00-832-8290	5	4
5310-00-243-4764	14	9	5855-00-832-9223	1	8
5330-00-248-3836	10	9	5305-00-837-3269	5	2
5325-00-250-6858	2	9	5315-00-844-5644	5	18
5325-00-276-4954	2	8	5930-00-892-9550	4	10

**CROSS- REFERENCE-INDEXES
NATIONAL STOCK NUMBER INDEX**

STOCK NUMBER	FIG.	ITEM	STOCK NUMBER	FIG.	ITEM
5855-00-904-0684	4	19			
5855-00-912-3885	1	5			
	12	3			
5310-00-914-8274	4	5			
5855-00-915-7930	4	1			
5855-00-922-6440	6	11			
5855-00-924-9994	1	12			
5855-00-925-0114	4	6			
6135-00-926-0827	1	4			
5310-00-928-2690	5	26			
5999-00-937-5317	3	2			
5855-00-937-5327	3	7			
5855-00-937-5328	3	4			
5315-00-937-5329	3	11			
5855-00-937-7703	4	15			
5855-00-937-7704	10	14			
5855-00-937-7705	4	17			
5855-00-937-7706	4	11			
5855-00-937-7707	5	7			
5330-00-937-7920	9	1			
5855-00-941-3036	1	9			
5855-00-941-3037	4	7			
5360-00-941-5009	4	2			
5855-00-962-2518	6	2			
5855-00-962-2520	6	8			
5855-00-962-3069	7	3			
5855-00-962-3111	7	1			
5855-00-962-3121	6	7			
5330-00-962-5554	7	2			
5855-00-962-6737	6	3			
5305-00-978-9347	4	22			
5340-01-061-6222	4	14			
5310-01-155-4310	12	6			

**NATIONAL STOCK NUMBER AND PART NUMBER INDEX
PART NUMBER INDEX**

FSCM	PART NUMBER	STOCK NUMBER	FIG.	ITEM
88044	AN227-11B	5325-00-276-4954	2	8
88044	AN227-12B	5325-00-276-4966	2	7
88044	AN227-13	5325-00-276-5876	2	10
88044	AN227-14B	5325-00-250-6858	2	9
88044	AN565BC2HI1	5305-00-837-3269	5	2
81352	AN565FCSH4	5305-00-187-9895	5	23
80058	BA-1100/U	6135-00-926-0827	1	4
81349	MILC43006TYPEICL ASS1		2	2
81349	MILH9890TYPE10	5340-00-753-5580	2	1
81349	MILT5038TYPE3		2	4
96906	MS15795-908	5310-00-045-5207	5	11
96906	MS16562-194	5315-00-844-5644	5	18
96906	MS16562-209	5315-00-058-9727	5	20
96906	MS16995-25B	5305-00-417-5251	14	2
96906	MS16995-38B	5305-00-478-6632	14	6
96906	MS16997-19	5305-00-978-9347	4	22
96906	MS21208F4-10	5340-01-061-6222	4	14
81349	MS24655-221	5930-00-892-9550	4	10
96906	MS29513-012	5330-00-248-3836	10	9
96906	MS35338-134	5310-00-928-2690	5	26
96906	MS35338-137B	5310-00-224-0748	14	3
96906	MS35338-138B	5310-00-224-0749	14	7
96906	MS35338-139B	5310-00-243-4764	14	9
96906	MS51029-1	5305-00-638-1198	10	7
96906	MS51040-226	5305-00-182-9402	4	12
96906	MS51925-4	5365-00-127-7449	2	3
96906	MS51957-10	5305-00-054-5645	5	27
96906	M59021-030	5330-00-551-8252	4	3
96906	MS9021-035	5330-00-804-2747	6	9
96906	MS9021-038	5330-00-060-0602	6	1
96906	MS9021-041	5330-00-729-4655	4	16
96906	MS9021-042	5330-00-805-8688	10	15
80058	MT-4558/PVS-2	5855-00-405-0409	1	15
80058	MX-7833/PVS-2	5855-00-832-9223	1	8
80058	MX-7833A/PVS-2	5855-00-400-2619	1	13
80058	MX-8501/UV	5855-00-087-2948	1	14
80058	MX-8501A/UV	5855-00-177-3502	1	7
07322	Q4225	5330-00-316-0258	6	5
80063	SC-B-607131		13	3
80063	SC-B-607133		13	2
80063	SC-B-607255		12	4
80063	SC-B-611730	5855-00-937-5328	3	4
80063	SC-B-611732		3	6
80063	SC-B-611742-1	5855-00-937-5327	3	7
80063	SC-B-611742-2	5999-00-937-5317	3	2
80063	SC-B-614590	5330-00-937-7920	9	1
80063	SC-B-614599		4	26
80063	SC-B-614608	5855-00-791-1628	8	3
80063	SC-B-614622	5330-00-962-5554	7	2
80063	SC-B-614625		6	4

**NATIONAL STOCK NUMBER AND PART NUMBER INDEX
PART NUMBER INDEX**

FSCM	PART NUMBER	STOCK NUMBER	FIG.	ITEM
80063	SC-B-614627	5855-00-962-6737	6	3
80063	SC-B-614632	5305-00-832-6522	4	13
80063	SC-B-614635	5940-00-087-1570	4	23
80063	SC-B-614639	5855-00-915-7930	4	1
80063	SC-B-614650	5855-00-832-6570	5	25
80063	SC-B-614651	5315-00-832-6567	5	1
80063	SC-B-614652	5315-00-832-6529	5	6
80063	SC-B-614653	5855-00-832-6528	5	22
80063	SC-B-614654	5855-00-832-6527	5	13
80063	SC-B-614655	5315-00-832-6526	5	15
80063	SC-B-614656	5855-00-087-1566	5	10
80063	SC-B-614657	5310-00-832-8290	5	4
80063	SC-B-614658	5855-00-832-6524	5	3
80063	SC-B-614660	5310-00-087-3057	5	16
80063	SC-B-614662		5	19
80063	SC-B-614666	5855-00-087-1569	5	5
80063	SC-B-614700		2	5
80063	SC-B-614702	5330-00-783-2093	10	12
80063	SC-B-645706		4	18
80063	SC-B-645751-809	5310-01-155-4310	12	6
80063	SC-B-645752-153		5	8
80063	SC-B-645752-158	5310-00-087-3055	12	5
80063	SC-B-645759-312	5305-00-087-3080	12	2
80063	SC-B-647552	5305-00-167-1141	14	10
80063	SC-C-607130	5855-00-941-3036	1	9
80063	SC-C-607134		13	1
80063	SC-C-607230	5855-00-912-3885	1	5
			12	3
80063	SC-C-607232	5855-00-087-1565	12	1
80063	SC-C-611733	5315-00-937-5329	3	11
80063	SC-C-611734	5935-00-809-8701	3	10
80063	SC-C-611740-3	5855-00-179-4468	3	5
80063	SC-C-611740-4	5855-00-174-3478	3	5
80063	SC-C-611787	5935-00-451-5226	3	8
80063	SC-C-614578	5855-00-937-7704	10	14
80063	SC-C-614579	5855-00-087-6428	10	1
80063	SC-C-614580	5855-00-087-1540	10	3
80063	SC-C-614581	5855-00-087-1548	10	5
			11	2
80063	SC-C-614582	5855-00-087-1543	10	6
			11	3
80063	SC-C-614583		9	2
80063	SC-C-614584	5855-00-087-1556	10	11
80063	SC-C-614587	5855-00-087-1555	10	2
80063	SC-C-614588	5855-00-832-6518	10	13
80063	SC-C-614589	5855-00-087-7833	10	16
80063	SC-C-614591		10	8
80063	SC-C-614598	5855-00-779-2848	4	4
80063	SC-C-614602	5855-00-922-6440	6	11
80063	SC-C-614607	5855-00-962-2518	6	2
80063	SC-C-614611	5855-00-791-1637	8	2

**NATIONAL STOCK NUMBER AND PART NUMBER INDEX
PART NUMBER INDEX**

FSCM	PART NUMBER	STOCK NUMBER	FIG.	ITEM
80063	SC-C-614613		8	4
80063	SC-C-614614	5855-00-791-1644	8	1
80063	SC-C-614617	5855-00-962-3069	7	3
80063	SC-C-614621		7	4
80063	SC-C-614634	5855-00-832-6517	4	21
80063	SC-C-614637	5855-00-832-6516	4	24
80063	SC-C-614643	5360-00-941-5009	4	2
80063	SC-C-614649	5365-00-832-6514	4	8
80063	SC-C-614661	5355-00-087-2770	5	17
80063	SC-C-614663	5855-00-937-7707	5	7
80063	SC-C-614684-1	5855-00-782-7546	1	11
80063	SC-C-614706	5310-00-832-8258	6	6
80063	SC-C-645753-15		4	25
80063	SC-C-645753-2	5305-00-087-3081	4	25
			5	9
80063	SC-C-647551	5855-00-093-5850	14	5
80063	SC-C-647741		4	9
80063	SC-D-607132		13	4
80063	SC-D-611726	5855-00-832-7287	3	9
80063	SC-D-611728		3	1
80063	SC-D-611760	5855-00-134-6233	3	3
80063	SC-D-611781-1	5855-00-174-3483	3	3
80063	SC-D-611782		3	1
80063	SC-D-611783	5855-00-198-3197	3	9
80063	SC-D-614577	5855-00-937-7703	4	15
80063	SC-D-614585		11	1
80063	SC-D-614592		9	3
80063	SC-D-614595	5855-00-832-6513	5	28
80063	SC-D-614596	5855-00-937-7705	4	17
80063	SC-D-614596-2	5855-00-400-2620	4	17
80063	SC-D-614600-1	5310-00-914-8274	4	5
80063	SC-D-614601	5855-00-941-3037	4	7
80063	SC-D-614612		8	5
80063	SC-D-614615		5	24
80063	SC-D-614616	5855-00-962-2520	6	8
80063	SC-D-614620	5855-00-962-3111	7	1
80063	SC-D-614628	5855-00-962-3121	6	7
80063	SC-D-614644	5855-00-937-7706	4	11
80063	SC-D-614645	5855-00-091-9126	4	20
80063	SC-D-614667	5855-00-832-6525	1	1
80063	SC-D-614668	5855-00-924-9994	1	12
80063	SC-D-614669	5855-00-832-6523	1	2
80063	SC-D-614675	5855-00-832-6512	5	21
80063	SC-D-614688	5355-00-832-6568	5	12
80063	SC-D-614689	5855-00-832-6569	5	14
80063	SC-D-614703	5855-00-925-0114	4	6
80063	SC-D-645702	5855-00-400-2624	10	4
80063	SC-D-645703	5855-00-400-2622	10	10
80063	SC-D-645704	5855-00-400-2621	4	15
80063	SC-D-647514-2	5855-00-167-0992	14	1
80063	SC-D-647530-1	5855-00-107-7992	14	11

NATIONAL STOCK NUMBER AND PART NUMBER INDEX
PART NUMBER INDEX

FSCM	PART NUMBER	STOCK NUMBER	FIG.	ITEM
80063	SC-D-647548	5855-00-093-5847	14	8
80063	SC-D-647549-1	5855-00-114-4946	14	4
80063	SC-D-649064	5855-00-165-3093	6	10
24608	TSY7106	7920-00-205-0565	1	10
81348	VT295TYPE1CLASS1 SIZEFF		2	6
97403	13211E3058	5855-00-904-0684	4	19
80064	1940722	5120-00-198-5390	1	3
06650	354	6640-00-240-5851	1	6

CROSS REFERENCE INDEXES

FIG.	ITEM	FIGURE AND ITEM NUMBER INDEX STOCK NUMBER	FSCM	PART NUMBER
1	1	5855-00-832-6525	80063	SC-D-614667
1	2	5855-00-832-6523	80063	SC-D-614669
1	3	5120-00-198-5390	80064	1940722
1	4	6135-00-926-0827	80058	BA-1100/U
1	5	5855-00-912-3885	80063	SC-C-607230
1	6	6640-00-240-5851	06650	354
1	7	5855-00-177-3502	80058	MX-8501A/UV
1	8	5855-00-832-9223	80058	MX-7833/PVS-2
1	9	5855-00-941-3036	80063	SC-C-607130
1	10	7920-00-205-0565	24608	TSY7106
1	11	5855-00-782-7546	80063	SC-C-614684-1
1	12	5855-00-924-9994	80063	SC-D-614668
1	13	5855-00-400-2619	80058	MX-7833A/PVS-2
1	14	5855-00-087-2948	80058	MX-8501/UV
1	15	5855-00-405-0409	80058	MT-4558/PVS-2
2	1	5340-00-753-5580	81349	MILH9890TYPE1O
2	2		81349	MILC43006TYPE1CL ASS1
2	3	5365-00-127-7449	96906	MS51925-4
2	4		81349	MILT5038TYPE3
2	5		80063	SC-B-614700
2	6		81348	VT295TYPE1CLASS1 SIZEFF
2	7	5325-00-276-4966	88044	AN227-12B
2	8	5325-00-276-4954	88044	AN227-11B
2	9	5325-00-250-6858	88044	AN227-14B
2	10	5325-00-276-5876	88044	AN227-13
3	1		80063	SC-D-611728
3	1		80063	SC-D-611782
3	2	5999-00-937-5317	80063	SC-B-611742-2
3	3	5855-00-134-6233	80063	SC-D-611760
3	3	5855-00-174-3483	80063	SC-D-611781-1
3	4	5855-00-937-5328	80063	SC-B-611730
3	5	5855-00-174-3478	80063	SC-C-611740-4
3	5	5855-00-179-4468	80063	SC-C-611740-3
3	6		80063	SC-B-611732
3	7	5855-00-937-5327	80063	SC-B-611742-1
3	8	5935-00-451-5226	80063	SC-C-611787
3	9	5855-00-198-3197	80063	SC-D-611783
3	9	5855-00-832-7287	80063	SC-D-611726
3	10	5935-00-809-8701	80063	SC-C-611734
3	11	5315-00-937-5329	80063	SC-C-611733
4	1	5855-00-915-7930	80063	SC-B-614639
4	2	5360-00-941-5009	80063	SC-C-614643
4	3	5330-00-551-8252	96906	MS9021-030
4	4	5855-00-779-2848	80063	SC-C-614598
4	5	5310-00-914-8274	80063	SC-D-614600-1
4	6	5855-00-925-0114	80063	SC-D-614703
4	7	5855-00-941-3037	80063	SC-D-614601
4	8	5365-00-832-6514	80063	SC-C-614649
4	9		80063	SC-C-647741

CROSS REFERENCE INDEXES

FIG.	ITEM	FIGURE AND ITEM NUMBER INDEX STOCK NUMBER	FSCM	PART NUMBER
4	10	5930-00-892-9550	81349	MS24655-221
4	11	5855-00-937-7706	80063	SC-D-614644
4	12	5305-00-182-9402	96906	MS51040-226
4	13	5305-00-832-6522	80063	SC-B-614632
4	14	5340-01-061-6222	96906	MS21208F4-IO
4	15	5855-00-400-2621	80063	SC-D-645704
4	15	5855-00-937-7703	80063	SC-D-614577
4	16	5330-00-729-4655	96906	MS9021-041
4	17	5855-00-400-2620	80063	SC-D-614596-2
4	17	5855-00-937-7705	80063	SC-D-614596
4	18		80063	SC-B-645706
4	19	5855-00-904-0684	97403	13211E3058
4	20	5855-00-091-9126	80063	SC-D-614645
4	21	5855-00-832-6517	80063	SC-C-614634
4	22	5305-00-978-9347	96906	MS16997-19
4	23	5940-00-087-1570	80063	SC-B-614635
4	24	5855-00-832-6516	80063	SC-C-614637
4	25		80063	SC-C-645753-15
4	25	5305-00-087-3081	80063	SC-C-645753-2
4	26		80063	SC-B-614599
5	1	5315-00-832-6567	80063	SC-B-614651
5	2	5305-00-837-3269	88044	AN565BC2H1
5	3	5855-00-832-6524	80063	SC-B-614658
5	4	5310-00-832-8290	80063	SC-B-614657
5	5	5855-00-087-1569	80063	SC-B-614666
5	6	5315-00-832-6529	80063	SC-B-614652
5	7	5855-00-937-7707	80063	SC-C-614663
5	8		80063	SC-B-645752-153
5	9	5305-00-087-3081	80063	SC-C-645753-2
5	10	5855-00-087-1566	80063	SC-B-614656
5	11	5310-00-045-5207	96906	MS15795-908
5	12	5355-00-832-6568	80063	SC-D-614688
5	13	5855-00-832-6527	80063	SC-B-614654
5	14	5855-00-832-6569	80063	SC-D-614689
5	15	5315-00-832-6526	80063	SC-B-614655
5	16	5310-00-087-3057	80063	SC-B-614660
5	17	5355-00-087-2770	80063	SC-C-614661
5	18	5315-00-844-5644	96906	MS16562-194
5	19		80063	SC-B-614662
5	20	5315-00-058-9727	96906	MS16562-209
5	21	5855-00-832-6512	80063	SC-D-614675
5	22	5855-00-832-6528	80063	SC-B-614653
5	23	5305-00-187-9895	81352	AN565FCSH4
5	24		80063	SC-D-614615
5	25	5855-00-832-6570	80063	SC-B-614650
5	26	5310-00-928-2690	96906	M535338-134
5	27	5305-00-054-5645	96906	MS51957-10
5	28	5855-00-832-6513	80063	SC-D-614595
6	1	5330-00-060-0602	96906	MS9021-038
6	2	5855-00-962-2518	80063	SC-C-614607
6	3	5855-00-962-6737	80063	SC-B-614627

CROSS REFERENCE INDEXES

FIG.	ITEM	FIGURE AND ITEM NUMBER INDEX STOCK NUMBER	FSCM	PART NUMBER
6	4		80063	SC-B-614625
6	5	5330-00-316-0258	07322	Q4225
6	6	5310-00-832-8258	80063	SC-C-614706
6	7	5855-00-962-3121	80063	SC-D-614628
6	8	5855-00-962-2520	80063	SC-D-614616
6	9	5330-00-804-2747	96906	MS9021-035
6	10	5855-00-165-3093	80063	SC-D-649064
6	11	5855-00-922-6440	80063	SC-C-614602
7	1	5855-00-962-3111	80063	SC-D-614620
7	2	5330-00-962-5554	80063	SC-B-614622
7	3	5855-00-962-3069	80063	SC-C-614617
7	4		80063	SC-C-614621
8	1	5855-00-791-1644	80063	SC-C-614614
8	2	5855-00-791-1637	80063	SC-C-614611
8	3	5855-00-791-1628	80063	SC-B-614608
8	4		80063	SC-C-614613
8	5		80063	SC-D-614612
9	1	5330-00-937-7920	80063	SC-B-614590
9	2		80063	SC-C-614583
9	3		80063	SC-D-614592
10	1	5855-00-087-6428	80063	SC-C-614579
10	2	5855-00-087-1555	80063	SC-C-614587
10	3	5855-00-087-1540	80063	SC-C-614580
10	4	5855-00-400-2624	80063	SC-D-645702
10	5	5855-00-087-1548	80063	SC-C-614581
10	6	5855-00-087-1543	80063	SC-C-614582
10	7	5305-00-638-1198	96906	MS51029-1
10	8		80063	SC-C-614591
10	9	5330-00-248-3836	96906	MS29513-012
10	10	5855-00-400-2622	80063	SC-D-645703
10	11	5855-00-087-1556	80063	SC-C-614584
10	12	5330-00-783-2093	80063	SC-B-614702
10	13	5855-00-832-6518	80063	SC-C-614588
10	14	5855-00-937-7704	80063	SC-C-614578
10	15	5330-00-805-8688	96906	MS9021-042
10	16	5855-00-087-7833	80063	SC-C-614589
11	1		80063	SC-D-614585
11	2	5855-00-087-1548	80063	SC-C-614581
11	3	5855-00-087-1543	80063	SC-C-614582
12	1	5855-00-087-1565	80063	SC-C-607232
12	2	5305-00-087-3080	80063	SC-B-645759-312
12	3	5855-00-912-3885	80063	SC-C-607230
12	4		80063	SC-B-607255
12	5	5310-00-087-3055	80063	SC-B-645752-158
12	6	5310-01-155-4310	80063	SC-B-645751-809
13	1		80063	SC-C-607134
13	2		80063	SC-B-607133
13	3		80063	SC-B-607131
13	4		80063	SC-D-607132
14	1	5855-00-167-0992	80063	SC-D-647514-2
14	2	5305-00-417-5251	96906	MS16995-25B

CROSS REFERENCE INDEXES

FIG.	ITEM	FIGURE AND ITEM NUMBER INDEX STOCK NUMBER	FSCM	PART NUMBER
14	3	5310-00-224-0748	96906	MS35338-137B
14	4	5855-00-114-4946	80063	SC-D-647549-1
14	5	5855-00-093-5850	80063	SC-C-647551
14	6	5305-00-478-6632	96906	MS16995-38B
14	7	5310-00-224-0749	96906	MS35338-138B
14	8	5855-00-093-5847	80063	SC-D-647548
14	9	5310-00-243-4764	96906	MS35338-139B
14	10	5305-00-167-1141	80063	SC-B-647552
14	11	5855-00-107-7992	80063	SC-D-647530-1

By Order of the Secretary of the Army:

Official:

CARL E. VUONO
General, United States Army
Chief of Staff

R.L. DILWORTH
Brigadier General, United States Army
The Adjutant General

DISTRIBUTION:

To be distributed in accordance with DA Form 12-36 unit and DS/GS requirements for AN/PVS-2, A, B.

*U.S. GOVERNMENT PRINTING OFFICE: 1994 - 30021/82822

RECOMMENDED CHANGES TO EQUIPMENT TECHNICAL PUBLICATIONS



THEN... JOT DOWN THE DOPE ABOUT IT ON THIS FORM, CAREFULLY TEAR IT OUT, FOLD IT AND DROP IT IN THE MAIL!

SOMETHING WRONG WITH THIS PUBLICATION?

FROM: (PRINT YOUR UNIT'S COMPLETE ADDRESS)

DATE SENT

PUBLICATION NUMBER

PUBLICATION DATE

PUBLICATION TITLE

BE EXACT... PIN-POINT WHERE IT IS

PAGE NO.

PARA-GRAPH

FIGURE NO.

TABLE NO.

IN THIS SPACE TELL WHAT IS WRONG AND WHAT SHOULD BE DONE ABOUT IT:

TEAR ALONG PERFORATED LINE

PRINTED NAME, GRADE OR TITLE, AND TELEPHONE NUMBER

SIGN HERE:

DA FORM 2028-2 JUL 79

PREVIOUS EDITIONS ARE OBSOLETE.

P.S.—IF YOUR OUTFIT WANTS TO KNOW ABOUT YOUR RECOMMENDATION MAKE A CARBON COPY OF THIS AND GIVE IT TO YOUR HEADQUARTERS.

